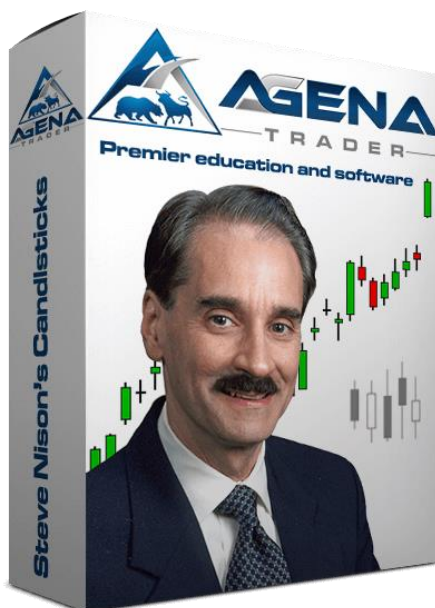




## NISON CANDLESTICKS -ADDON-

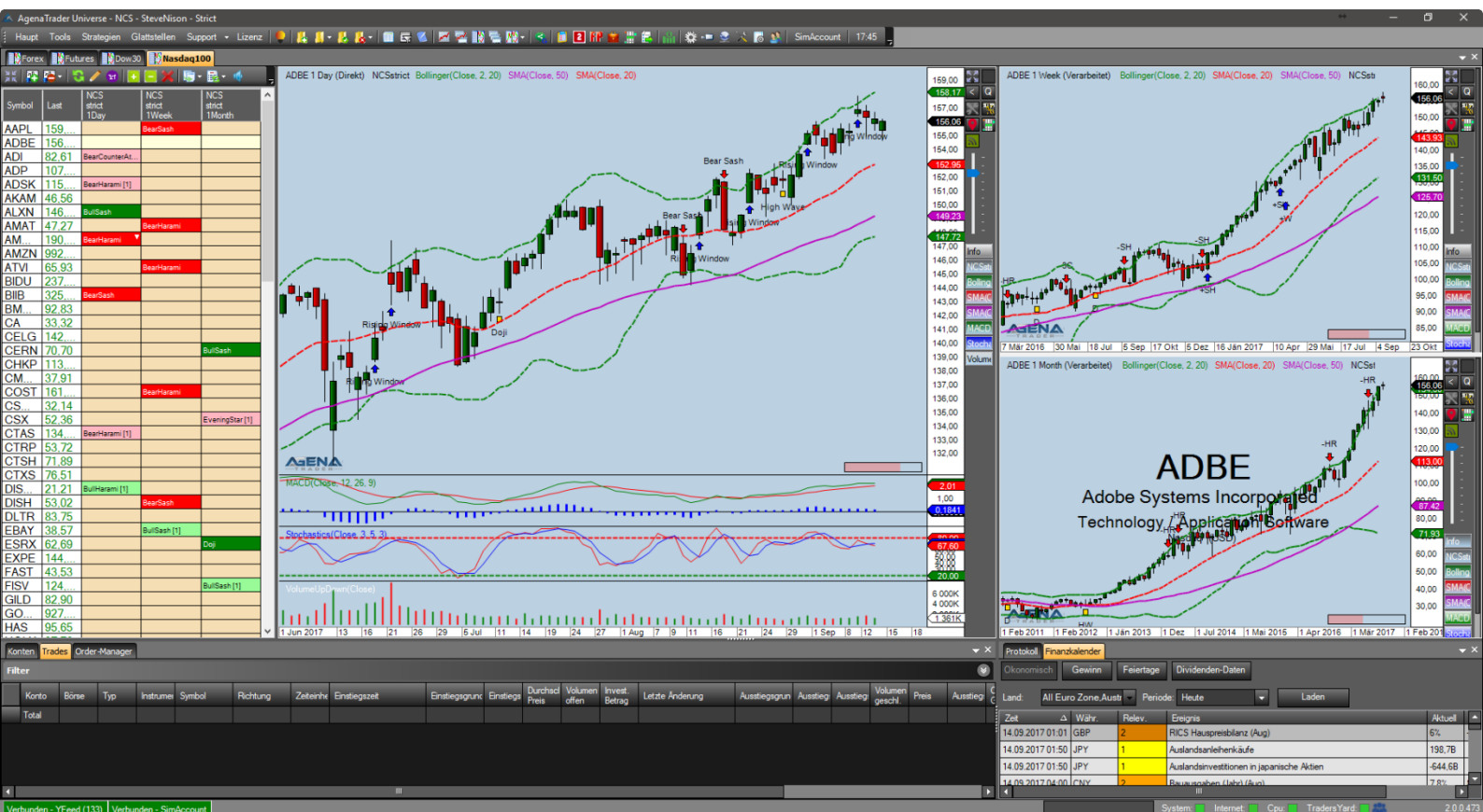
[www.agenatrader.com/steve-nisons-candlesticks](http://www.agenatrader.com/steve-nisons-candlesticks)



STEVE NISON'S  
**Candlecharts.com**

# TABLE OF CONTENTS

Brief description of NisonCandleSticks	3
Instructions for package installation	4
Contents of NisonCandleSticks AddOn	5
1. The NCS workspaces	6
2. The NCS CandleChart indicator	9
3. The NCS conditions	10
4. NCS FAQs	14



## Brief description of **NisonCandleSticks**

### ***WARNING!***

Dear customers, before you start working with the NCS workspace and the indicators, we ask that you read through these instructions carefully before modifying any settings. The NCS AddOn is an advanced tool that contains many settings and parameters. Incorrect settings that are made out of “curiosity” can lead to undesired behavior.

### ***IMPORTANT!***

You can carry out any changes you like in the indicator settings; however, we strongly recommend that you only touch the parameters with which you are familiar.

You can receive more detailed information and further education on trading with candlestick patterns directly in [Steve Nison’s “Candlecharts Academy”](#).

Wishing you much success in your trading with the NCS AddOn,  
your AgenaTrader support team & Steve Nison’s Candlecharts.com team



## Instructions for **package installation**

1. After making your purchase, you will receive the NisonCandleSticks.atpack file sent to you by email. This file is the actual package including all components contained within.

### **ATTENTION!**

If you are using Internet Explorer or Microsoft Edge, the .atpack file may automatically be renamed as a zip file by your browser. After downloading, therefore, you need to rename the NisonCandleSticks.zip to NisonCandleSticks.atpack!

2. Save the NisonCandleSticks.atpack file on your hard drive.
3. Now you still need to enter your license for the package in AgenaTrader. To do so, click on "License" in the main toolbar and select "Enter activation key", then navigate to "NisonCandleSticks" and enter your activation key, which you received via email (you will find the key directly in your invoice). Click on "Activate". Once you see the message that your license has been successfully activated, close this window.
4. Open Tools->Packages->Import package, read the subsequent backup information and, if you have already carried out a backup, click on OK. In the next window, navigate to the storage location of the NisonCandleSticks.atpack file, click on it and then select "Open". Confirm the request to restart AgenaTrader by clicking on "OK".
5. After restarting, the first step is to establish a connection to the data feed.
6. Once you have established a connection to your data feed, select Main -> Workspace -> NisonCandleSticks to load one of the NisonCandleSticks workspaces. As soon as all charts are fully loaded, the NisonCandleSticks package is completely ready for use.

## Contents of **NisonCandleSticks Add-On**

- 1. NCS workspaces:**
  - 1.1. NCS - Default - Standard
  - 1.2. NCS - Default - Strict
  - 1.3. NCS - SteveNison - Standard
  - 1.4. NCS - SteveNison - Strict
  - 1.5. NCS - SwingTrade - Standard
  - 1.6. NCS - SwingTrade - Strict
  
- 2. Indicator:**
  - 2.1. Nison CandleChart
  
- 3. Conditions:**
  - 3.1. BearCounterAttack
  - 3.2. BearHarami
  - 3.3. BearishEngulfing
  - 3.4. BearSash
  - 3.5. BearSeparatingLine
  - 3.6. BullCounterAttack
  - 3.7. BullHarami
  - 3.8. BullishEngulfing
  - 3.9. BullSash
  - 3.10. BullSeparatingLine
  - 3.11. DarkcloudCover
  - 3.12. Doji
  - 3.13. EveningStar
  - 3.14. FallingThree
  - 3.15. FallingWindow
  - 3.16. Hammer
  - 3.17. HangingMan
  - 3.18. HighWave
  - 3.19. InvertedHammer
  - 3.20. MorningStar
  - 3.21. Piercing
  - 3.22. RisingThree
  - 3.23. RisingWindow
  - 3.24. ShootingStar
  - 3.25. ThreeBlackCrows
  - 3.26. ThreeWhiteSoldiers
  - 3.27. TweezersBottom
  - 3.28. TweezersTop
  
- 4. Predefined trade setups for every condition**
- 5. FAQs**

# 1. The NCS workspaces

The NCS package contains 6 predefined workspaces that optimally support trading with the CandleStick signals.

For each workspace type, there is a “Standard” and a “Strict” version. In the standard versions, the CandleStick indicator, all conditions in the ActionBar, and all real-time scans are screened using the standard settings (= FilterType for all signals set to “Yes” -> see “2. The NCS indicator”). In the strict versions, the more restrictive settings (= FilterType set to “Strict” -> again see “2. The NCS indicator”) are used for all components (indicator, conditions, scans).

The package contains the following workspaces:

## 1.1.NCS - Default - Standard

Indicators in the chart:

- CandleChart with FilterType = “Yes”

Indicators in the ActionBar:

- Bollinger Bands, default settings
- SMA, period = 20, color = red
- SMA, period = 50, color = pink
- Stochastic, D = 3, K = 5, smooth = 3
- MACD, default settings
- Volume histogram
- All 28 signal conditions with FilterType = “Yes”  
Green = long signal, red = short signal, yellow = neutral signal

Real-time scan:

- All 28 NCS signals with FilterType = “Yes” in the daily, weekly and monthly charts respectively

## 1.2.NCS - Default - Strict

Indicators in the chart:

- CandleChart with FilterType = “Strict”

Indicators in the ActionBar:

- Bollinger Bands, default settings
- SMA, period = 20, color = red
- SMA, period = 50, color = pink
- Stochastic, D = 3, K = 5, smooth = 3
- MACD, default settings
- Volume histogram
- All 28 signal conditions with FilterType = “Strict”

Real-time scan:

- All 28 NCS signals with FilterType = “Strict” in the daily, weekly and monthly charts respectively



Image 1 - Default workspace [Standard & Strict]

### 1.3.NCS - SteveNison - Standard

Indicators in the chart:

- CandleChart with FilterType = “Yes”
- Bollinger Bands, default settings
- SMA, period = 20, color = red
- SMA, period = 50, color = pink
- Stochastic, D = 3, K = 5, smooth = 3
- MACD, default settings
- Volume histogram

Indicators in the ActionBar:

- All indicators from the chart plus
- All 28 signal conditions with FilterType = “Yes”  
Green = long signal, red = short signal, yellow = neutral signal

Real-time scan:

- All 28 NCS signals with FilterType = “Yes” in the daily, weekly and monthly charts respectively

### 1.4.NCS - SteveNison - Strict

Indicators in the chart:

- CandleChart with FilterType = “Strict”

- Bollinger Bands, default settings
- SMA, period = 20, color = red
- SMA, period = 50, color = pink
- Stochastic, D = 3, K = 5, smooth = 3
- MACD, default settings
- Volume histogram

Indicators in the ActionBar:

- All indicators from the chart plus
- All 28 signal conditions with FilterType = "Strict"

Real-time scan:

- All 28 NCS signals with FilterType = "Strict" in the daily, weekly and monthly charts respectively

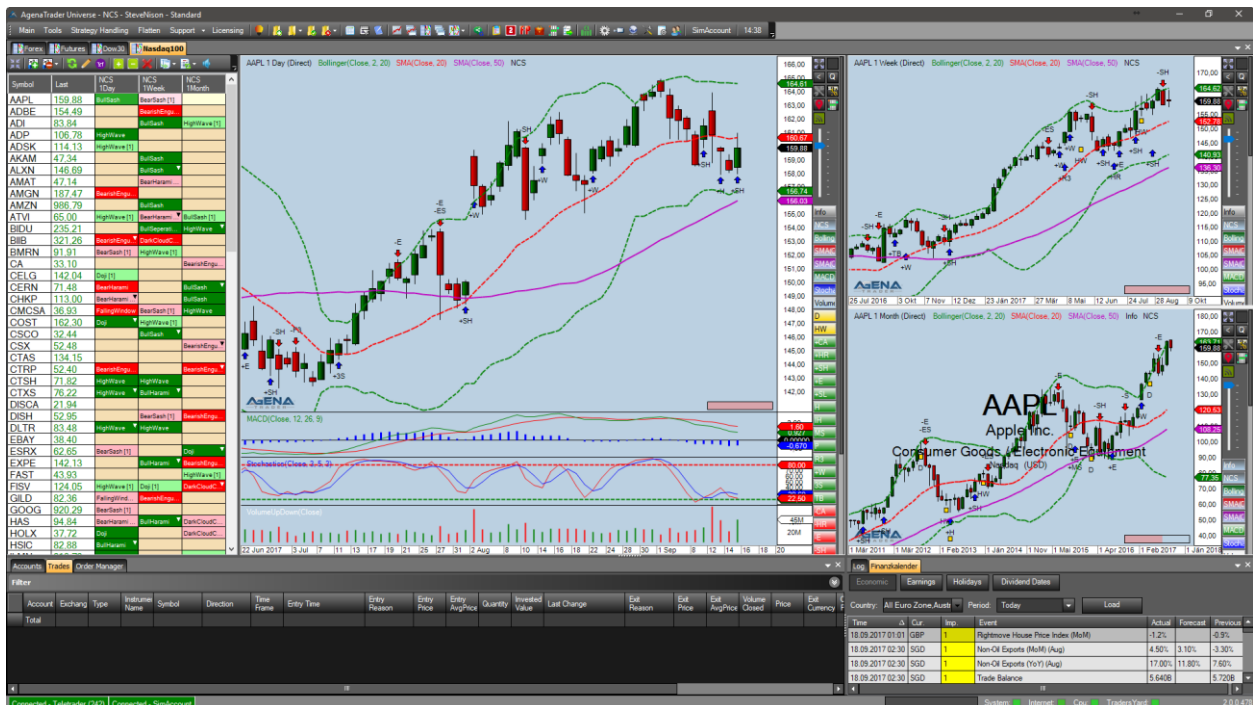


Image 2 - SteveNison workspace [Standard & Strict]

### 1.5.NCS - SwingTrade - Standard

Indicators in the chart:

- CandleChart with FilterType = "Yes"
- SMA, period =10, color = red
- EMA, period =30, color = blue
- Volume histogram

Indicators in the ActionBar:

- Info indicator
- CandleChart with FilterType = "Yes"
- SMA, period =10, color = red
- EMA, period =30, color = blue



- Volume histogram
- All 28 signal conditions with FilterType = “Yes”

Real-time scan:

- All 28 NCS signals with FilterType = “Yes” in the daily, weekly and monthly charts respectively

### 1.6.NCS - SwingTrade - Strict

Indicators in the chart:

- CandleChart with FilterType = “Strict”
- SMA, period =10, color = red
- EMA, period =30, color = blue
- Volume histogram

Indicators in the ActionBar:

- Info indicator
- CandleChart with FilterType = “Strict”
- SMA, period =10, color = red
- EMA, period =30, color = blue
- Volume histogram
- All 28 signal conditions with FilterType = “Strict”

Real-time scan:

- All 28 NCS signals with FilterType = “Strict” in the daily, weekly and monthly charts respectively






Image 3 - SwingTrade workspace [Standard & Strict]

## 2. The NCS CandleChart Indicator

This indicator is the core element of the NisonCandleStick package, and contains the entire calculation of all candlestick signals. It is based on this indicator that the signals are shown in the chart and that all ScriptedConditions in the package are calculated. You can find the CandleChart indicator under “Programmed indicators”.

The following parameter settings are available for this indicator:

- **Display**
  - Long Signal Marker
    - Color of the chart symbol for long signals
  - Neutral Signal Marker
    - Color of the chart symbol for neutral signals
  - Short Signal Marker
    - Color of the chart symbol for short signals
  - Text color
    - Color of the text in the chart for labeling the signals
  - Use Pattern Abbreviation
    - If you select “True”, the signals are displayed with their abbreviations in the chart. If you select “False”, the complete signal names are displayed.
- **Pattern: Bear**
  - Can be selected for every signal:
    - No: the signal is deactivated and no scanning of this signal occurs
    - Yes: the signal is scanned for with its default settings
    - Strict: the signal is scanned for with the more restrictive “Strict” settings
- **Pattern: Bull**
  - Same settings options as for “Pattern: Bear”
- **Pattern: Neutral**
  - Same settings options as for “Pattern: Bear”
- **Select All**
  - Select/Unselect All
    - No: sets all signals to “No”
    - Yes: sets all signals to “Yes”
    - Strict: sets all signals to “Strict”; RisingWindow and FallingWindow are set to “Yes”.

<b>Display</b>		
Long Signal Marker		Blue
Neutral Signal Marker		Gold
Short Signal Marker		Red
Text color		Black
Use Pattern Abbreviat		True
<b>General</b>		
Auto adjustable scale		False
Calculate on closed b		True
Caption		Candlechart(Close)
Debug Logging		False
Displacement		0
Required bars count		20
Show in Data Box		True
Show price marker(s)		True
<b>Input</b>		
Input Series		Close
Instrument		
Time-Frame		(Empty)
<b>Pattern: Bear</b>		
ShootingStar		Yes
Hanging Man		Yes
Bear Counter Attack		Yes
Bearish Engulfing		Yes
Bear Harami		Yes
Dark Cloud Cover		Yes
Bear Sash		Yes
Bear Separating Line		Yes
Tweezers Top		Yes
Falling Window		Yes
Evening Star		Yes
Falling Three		Yes
Three Black Crows		Yes
<b>Pattern: Bull</b>		
Hammer		Yes
Inverted Hammer		Yes
Bull Counter Attack		Yes
Bullish Engulfing		Yes
Bull Harami		Yes
Piercing		Yes
Bull Sash		Yes
Bull Separating Line		Yes
Tweezers Bottom		Yes
Rising Window		Yes
Morning Star		Yes
Rising Three		Yes
Three White Soldiers		Yes
<b>Pattern: Neutral</b>		
Doji		Yes
High Wave		Yes
<b>Select All</b>		
Select/Unselect All		Choose
<b>Visual</b>		
Chart Panel		Same as input series
Outputs Display Style		
Plots		

### 3. The NCS conditions

When you open the indicator window, under “Scripted Conditions” you will find all the signals from the NisonCandleStick package individually listed and selectable. The conditions give the same signals that the Candlestick indicator generates, just that here they are given as individual signals. Since these are ScriptedConditions, you can use them in AgenaTrader’s real-time scanner, and you can also assign a predefined setup to every entry signal in the Setup Escort. As soon as a signal appears in the scanner, it is enough to simply double click on the signal in order to place the preset trade setup into the market so that you can trade the corresponding candlestick signal (this can even be done in fully automated mode).

All conditions are structured in the same way and have only one important parameter:

**FilterType:**

- No -> deactivates the signal, no scan is carried out
- Yes -> the signal is scanned for with its default settings
- Strict (available for all signals except RisingWindow and FallingWindow) -> the signal is screened with more restrictive parameters, meaning that fewer signals are outputted than with the setting “Yes”. The precise conditions for when a strict signal occurs and when a standard “Yes” signal occurs are taught in Nison’s Candle Academy.

The following 28 CandleStick signal conditions are included in the package:

**3.1. BearCounterAttack**

- **Short** signal
- Abbreviation: “-CA”

**3.2. BearHarami**

- **Short** signal
- Abbreviation: “-HR”

**3.3. BearishEngulfing**

- **Short** signal
- Abbreviation: “-E”

**3.4. BearSash**

- **Short** signal
- Abbreviation: “-SH”

**3.5. BearSeparatingLine**

- **Short** signal
- Abbreviation: “-SL”

**3.6. BullCounterAttack**

- **Long** signal
- Abbreviation: “+CA”

**3.7. BullHarami**

- **Long** signal

- Abbreviation: “+HR”

### 3.8. BullishEngulfing

- Long signal
- Abbreviation: “+E”

### 3.9. BullSash

- Long signal
- Abbreviation: “+SH”

### 3.10. BullSeparatingLine

- Long signal
- Abbreviation: “+SL”

### 3.11. DarkcloudCover

- Short signal
- Abbreviation: “DC”

### 3.12. Doji

- Neutral signal
- Abbreviation: “D”

### 3.13. EveningStar

- Short signal
- Abbreviation: “ES”

### 3.14. FallingThree

- Short signal
- Abbreviation: “F3”

### 3.15. FallingWindow

- Short signal
- Abbreviation: “-W”

### 3.16. Hammer

- Long signal
- Abbreviation: “H”

### 3.17. HangingMan

- Short signal
- Abbreviation: “HM”

### 3.18. HighWave

- Neutral signal

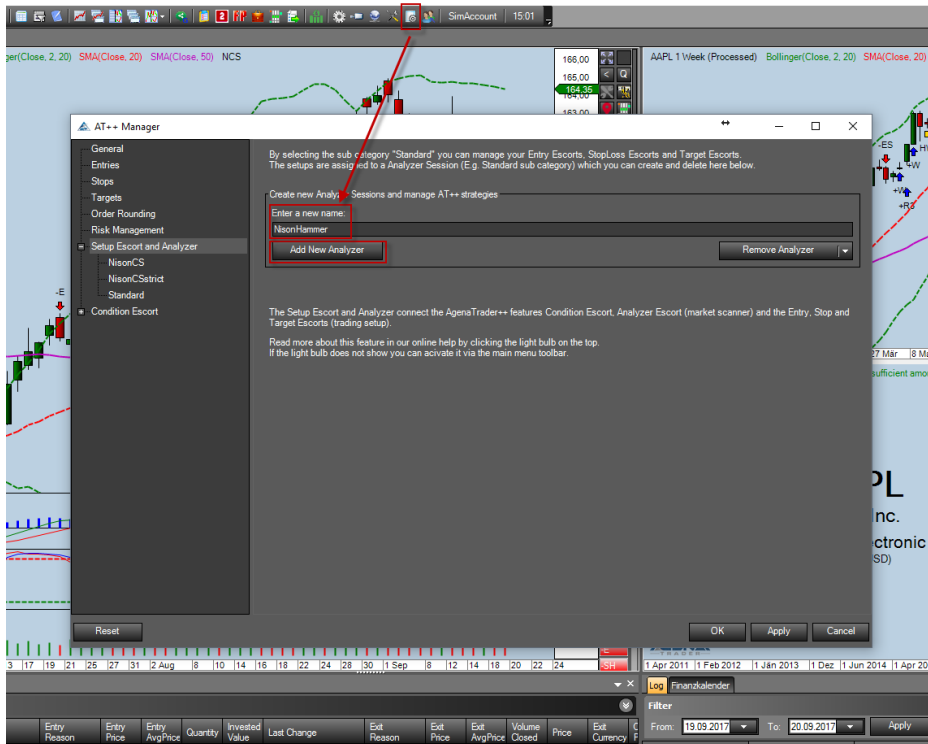
Name
Indicators
Premium Indicators
Scripted Indicators
Candlechart
Conditions
Scripted Conditions
BearCounterAtt...
BearHarami
BearishEngulfing
BearSash
BearSeperating...
BullCounterAtta...
BullHarami
BullishEngulfing
BullSash
BullSeperatingLi...
DarkCloudCover
Doji
EveningStar
FallingThree
FallingWindow
Hammer
HangingMan
HighWave
InvertedHammer
MorningStar
Piercing
RisingThree
RisingWindow
ShootingStar
ThreeBlackCrows
ThreeWhiteSoldi...
TweezersBottom
TweezersTop

- Abbreviation: “HW”
- 3.19. **InvertedHammer**
- Long signal
  - Abbreviation: “IH”
- 3.20. **MorningStar**
- Long signal
  - Abbreviation: “MS”
- 3.21. **Piercing**
- Long signal
  - Abbreviation: “P”
- 3.22. **RisingThree**
- Long signal
  - Abbreviation: “R3”
- 3.23. **RisingWindow**
- Long signal
  - Abbreviation: “+W”
- 3.24. **ShootingStar**
- Short signal
  - Abbreviation: “S”
- 3.25. **ThreeBlackCrows**
- Short signal
  - Abbreviation: “3C”
- 3.26. **ThreeWhiteSoldiers**
- Long signal
  - Abbreviation: “3S”
- 3.27. **TweezersBottom**
- Long signal
  - Abbreviation: “TB”
- 3.28. **TweezersTop**
- Short signal
  - Abbreviation: “TT”

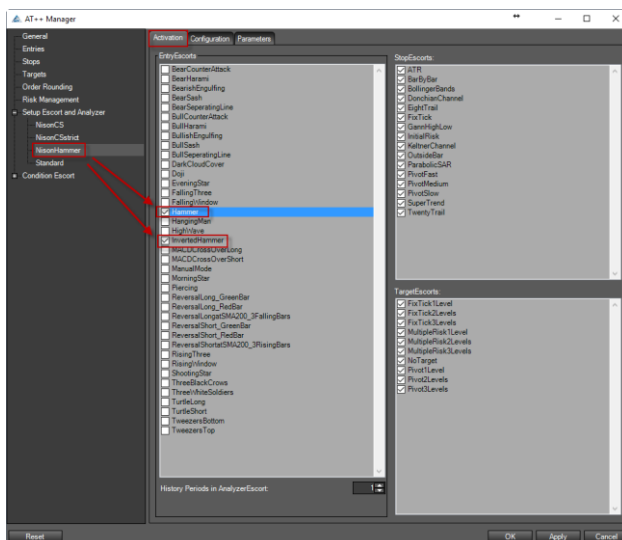
## 4. NCS FAQs

### 4.1. How can I configure a real-time scanner for a specific NCS signal?

1. Create a new AnalyzerSession with the desired name



2. Activate the desired signals for which you would like to scan

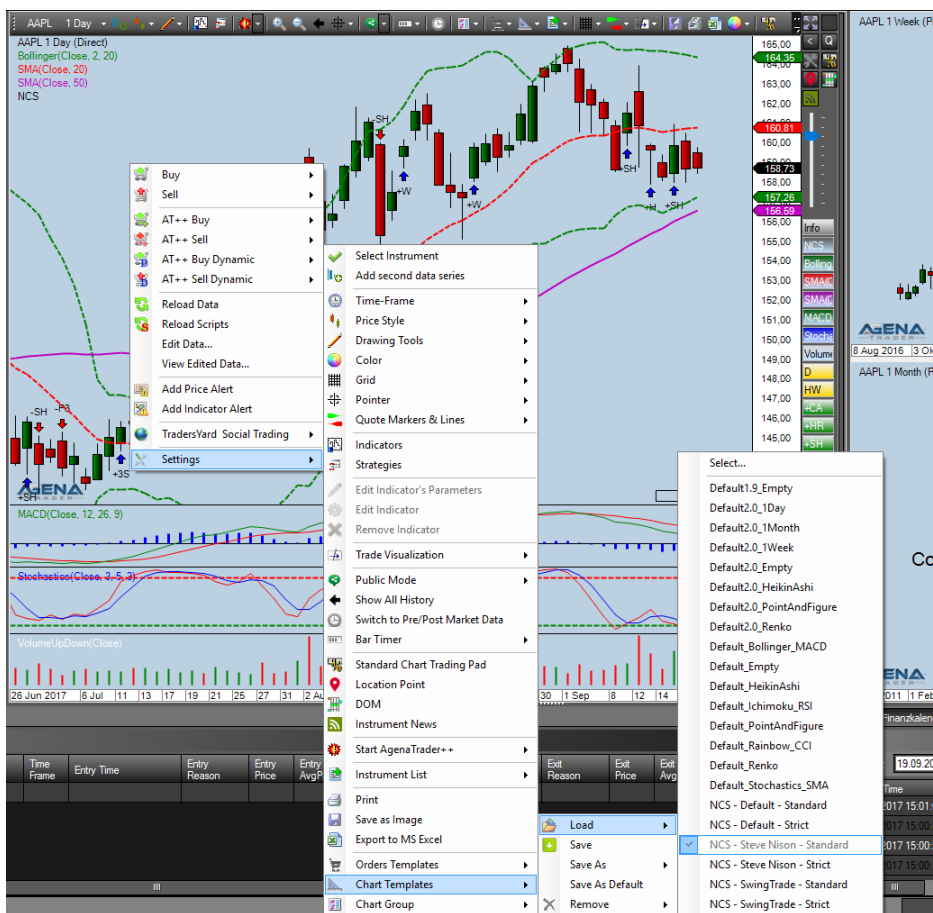


3. Load this AnalyzerSession in a scanner column. To do so, right-click in the scanner column -> Edit columns. In the new window, add an Analyzer Escort, select the desired AnalyzerSession and the desired timeframe in which the scan should run, and confirm by clicking on OK.



## 4.2. How do I load one of the NCS chart templates?

Right-click in the chart -> Settings -> ChartTemplates or ChartGroupTemplates -> Load -> Select template



A ChartTemplate contains default settings for a single chart; a ChartGroupTemplate contains default settings for the entire ChartContainer plus the scanner columns.

#### 4.3. How can I trade an occurring NCS signal?

When an NCS signal appears in the scanner, it is enough to double-click on the signal for the setup to be loaded into the chart. You then simply have to activate the order using the green checkmark, so that the setup is ready to go and the order is sent to your broker.



In the Setup Escort, under “Configuration”, for each signal you can select which default settings (initial stop, hard stop, soft stop, targets) each entry signal should contain.

#### 4.4. Where can I receive further education on trading with candlesticks?

In the Steve Nison Candle Academy, you can receive comprehensive training on all aspects of trading the candlestick signals: [LINK TO THE CANDLE ACADEMY](http://www.candlechartsacademy.com)

#### 4.5. Where can I receive further education on AgenaTrader?

In AgenaSpace, you will find all education channels and information sources for getting to know AgenaTrader in a professional way: [LINK TO AGENASPACE](http://www.agenatrader.com)

**To receive extra bonus items please register at**  
[www.candlechartsacademy.com](http://www.candlechartsacademy.com)  
After your registration please contact [paul@candlecharts.com](mailto:paul@candlecharts.com) to enable the bonus material for you.