



# CONCISE AGENATRADER HANDBOOK V 2.0

Daniel Stoxreiter

This handbook contains all core functions of AgenaTrader. It provides a comprehensive overview of all available functions. The brief handbook is ideal for newcomers to get started and orient themselves within the software. It also serves as a reference work for advanced users.





## Table of contents:

Product matrix .....	3
System requirements .....	9
Download & installation .....	10
License activation .....	12
Data and brokerage.....	13
The workspace.....	16
Setting up and connecting a new broker and data feed .....	18
Instruments and markets: import mappings .....	20
Education mode (software training) .....	21
Configuration Escort: general settings .....	23
Configuration Escort: chart.....	24
Charts and technical analysis .....	25
Working and navigating in the chart .....	27
Working with the mouse and keyboard .....	27
General chart settings.....	29
Add indicators and conditions.....	31
Apply drawing objects .....	33
Action bar .....	34
Instrument Escort: instruments and lists .....	37
Instrument lists .....	38
Scanner .....	39
Discretionary trading .....	41
Standard trading pad.....	41
Order connections .....	43
Chart trading.....	44
Further discretionary trading tools.....	45
Trading information.....	46
Accessories and system information .....	48
Support services .....	50
Hot keys .....	51
Alert settings.....	52
Automated chart analysis and trading .....	53
AgenaTrader Plus Plus (AT++) .....	53
Order Escort: managing your orders .....	56



Advanced scanner.....	58
Analyzer Escort column: signal scanner .....	59
Condition Escort: creating your own signals and conditions.....	61
Setup Escort: manual or automated trading setups .....	62
Risk management.....	65
Further automatic trading tools.....	66
Programming with AgenaScript.....	67
Using Microsoft Visual Studio as a scripting console.....	68
Tab chart groups: advanced charting .....	69
Stock EOD screener.....	69
Trading journal .....	69
Backtesting .....	69
Additional functions .....	69
Helpful links: .....	70



## Product matrix

Function	Basic	Andromeda	Comment
<b>General</b>			
Languages	DE, EN, RU	DE, EN, RU	
Package add-on	+	+	Not all packages are compatible with the Basic version. With Andromeda, all packages can be used.
Multiple connections	+	+	Connect several brokers or data accounts simultaneously
<b>Data</b>			
EOD data	+	+	Contained with Yfeed and Gfeed
Intraday data	+	+	Separate data feed required
Real-time data	+	+	Separate data feed required
<b>Brokerage</b>			
Forex	+	+	Broker account required
Stocks	+	+	Broker account required
Futures	+	+	Broker account required
CFD	+	+	Broker account required
Options	O	O	Beginning of 2018 Separate broker account required
Backup & recovery	+	+	



Function	Basic	Andromeda	Comment
<b>Workspace</b>			
Single monitor	+	+	
Multiple monitors	+	+	
<b>Charts and technical analysis</b>			
Single chart	+	+	
Single chart group	+	+	One symbol in up to 4 timeframes.
List chart group (LCG)	+	+	A list of symbols in up to 4 timeframes incl. scanner.
Tab chart group (TCG)	-	+	A list of symbols in up to 4 timeframes.
Chart gallery	-	-	Fee-based add-in required
Action bar	+	+	
Dynamic scanner	-	-	Fee-based add-in required. Also requires Andromeda.
Watch list	+	+	
Indicators (list)	110+	110+	Link: indicator help
Drawing objects	30+	30+	
DOM & Times and Sales	+	+	
Correlation matrix	-	-	Fee-based add-in required.



Function	Basic	Andromeda	Comment
<b>Scanner</b>			
Instrument information	+	+	
Indicators	+	+	
Conditions (signals)	+	+	
Analyzer Escort (AT++)	-	+	
<b>Market screening</b>			
Stock EOD screener	-	+	
Portfolio mixer	-	+	
<b>Fundamental analysis</b>			
CoT Report Escort	-	-	Fee-based add-on required.
Futures calendar	+	+	
Financial calendar	+	+	
<ul style="list-style-type: none"> <li>• <i>Economic data</i></li> <li>• <i>Earnings</i></li> <li>• <i>Holidays</i></li> <li>• <i>Dividends</i></li> </ul>			
Stock EOD screener	-	+	



Function	Basic	Andromeda	Comment
<b>Extras</b>			
Alerts	+	+	
• <i>Time alert</i>			
• <i>Price alert</i>			
• <i>Indicator alert</i>			
Notes	+	+	
Web tab	+	+	
Record/Replay Escort	+	+	

<b>Discretionary trading</b>			
Standard trading pad	+	+	
Market order	+	+	
Stop order	+	+	
Limit order	+	+	
Stop limit order	+	+	
Order connections (IFDone, OCO, ORO)	+	+	Allows you to manually create order setups with a stop loss and target.
QuickTrader	+	+	
DOM trading	+	+	
Chart trading	+	+	
Forex pad	+	+	
3rd level box	+	+	



Function	Basic	Andromeda	Comment
<b>Trading information</b>			
Position	+	+	
Order	+	+	
Executions	+	+	
Account	+	+	
Trading journal	-	+	
<ul style="list-style-type: none"> <li>• <i>Journal</i></li> </ul>			
<ul style="list-style-type: none"> <li>• <i>Performance graphic</i></li> </ul>			
Trading Journal+	-	-	Fee-based add-in for Andromeda required.
<ul style="list-style-type: none"> <li>• <i>Drawing in the performance graphic</i></li> <li>• <i>Indicators in the performance graphic</i></li> <li>• <i>Risk multiples</i></li> </ul>			
<ul style="list-style-type: none"> <li>• <i>Benchmark in the performance graphic</i></li> </ul>			
<ul style="list-style-type: none"> <li>• <i>Summary</i></li> </ul>			
<ul style="list-style-type: none"> <li>• <i>Trade collection</i></li> </ul>			





Function	Basic	Andromeda	Comment
<b>Automated trading</b>			
<b>Programming AgenaScript</b>			
<i>Indicators</i>	+	+	
<i>Strategies</i>	+	+	
<i>Conditions (signals)</i>	-	+	
<i>Alert handler</i>	-	+	
<b>AgenaTrader++</b>			Automated trading strategies without programming
AT++ Manager	-	+	General settings
Condition Escort	-	+	Create Drag&Drop signals/conditions
Setup Escort	-	+	<u>Click &amp; select:</u> stop loss, trailing stop, targets and more.
Analyzer (Escort)			Activate scans for the Analyzer
Risk and money management	-	+	Order size calculation
Order Escort (trading pad)	-	+	
DOM trading with strategy	-	+	
QuickTrader with strategy	-	+	
Chart trading with strategy	-	+	
<b>TradersYard</b>	+	+	



## System requirements

	Minimum	Recommended
Operating system	Windows 7, 8, 8.1, 10	Windows 7, 8, 8.1, 10
	(Apple MAC using a virtual machine)	(Apple MAC using a virtual machine)
Screen resolution	1024 x 768	1680 x 1050 and higher 1980 x 1080 max. resolution
Processor	Dual core 2Ghz+	Quad core or higher 3Ghz+
Memory (RAM)	8 GB	16 GB and higher
<a href="#">System type</a>	64-bit operating system	64-bit operating system
Hard drive	Standard SATA	SSD
Internet connection	8 Mbit/s	16 Mbit/s
<a href="#">Microsoft .NET Framework</a>	4.6	4.6

You can download the latest AgenaTrader version at <https://agenatrader.com/>.

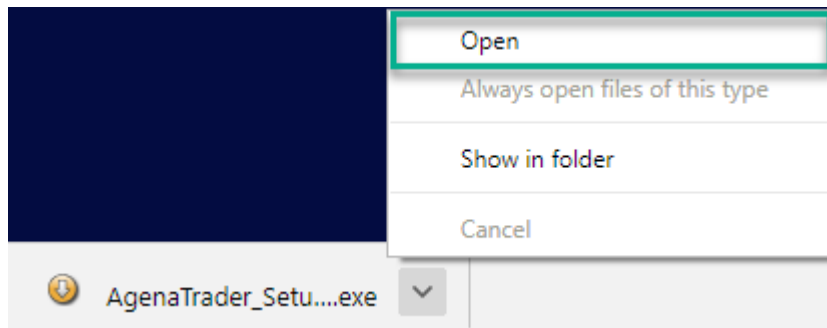


## Download & installation



You can find the current version of AgenaTrader as well as a beta version online at <https://agenatrader.com>. In the navigation, select Platform, and then choose your desired download (see image above).

After the download of your browser is completed, open the file AgenaTrader\_Setup.exe.

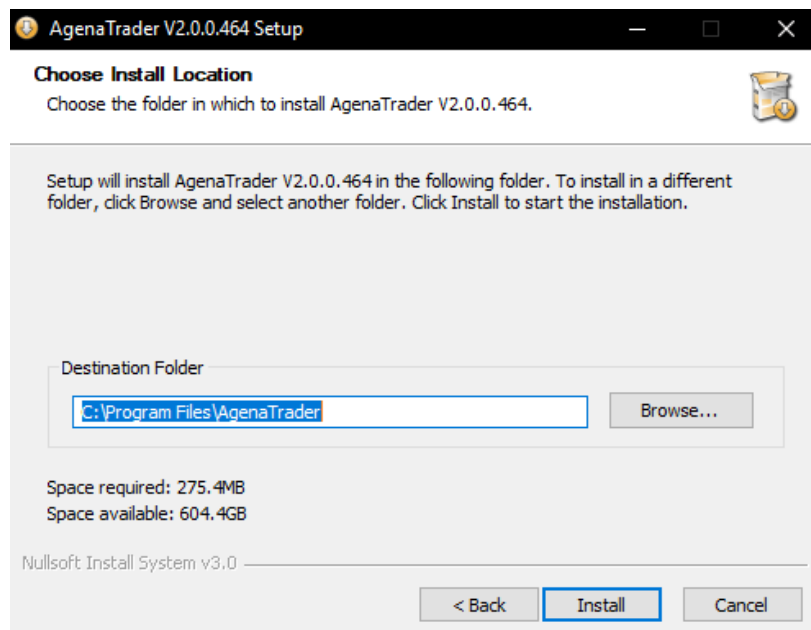




After you allow and confirm the installation, the AgenaTrader installation setup opens up. The first window shows the version to be installed.



Select the installation directory or leave it on the standard template. When you click *Install*, the installation starts automatically.





## License activation

If you already possess an activation key, you can enter it here and click on **Activate** to confirm. When you do so, the program startup is continued.

Name	Activation Key
BORN_Package	
BORN_PackageBestandskunde	
BORN_PackagePro	
BORN_PackageProBestandskunde	
COTPackageInstitutional	
COTPackageStandard	
NowThenProfessionalPackage	

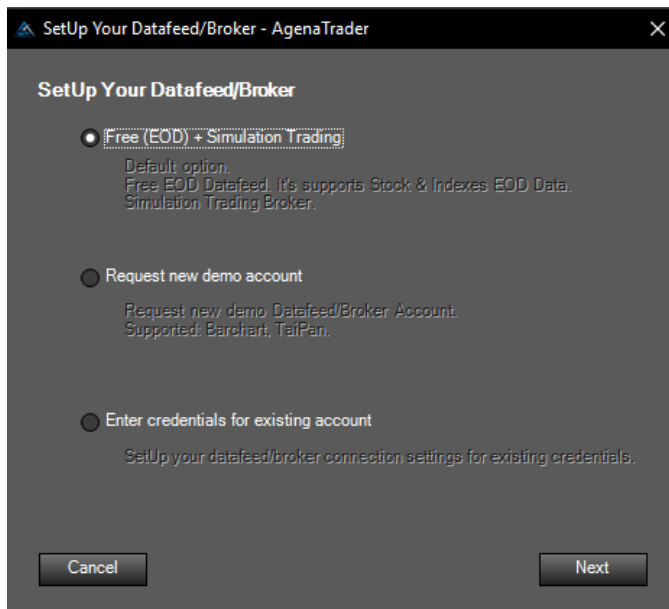
If you do not yet possess a license, you have the option to test the Andromeda version for 30 days free of charge. To do so, click the button *Request demo key* and carefully fill in the form. When you enter your valid email address, you automatically receive a key and the software is activated.

First Name:	Daniel
Last Name:	Stoxreiter
E-Mail:	feedback@agenatrader.com
Language:	English
<input checked="" type="checkbox"/> Yes, I would like to receive helpful tips and updates from AgenaTrader	
<input type="button" value="Request Demo Key"/> <input type="button" value="Cancel"/>	



## Data and brokerage

When you start up for the first time, you have to select the data feed and the broker account.



Option 1: Free (EOD) + Simulation Trading activates an EOD data feed for stocks and indexes. The charts do not tick, but rather update automatically every 15 minutes. In addition, a local trading account for simulated trading is connected.

Option 2: *Request new demo account* makes it possible for you to request a free demo for intraday data. The demo offer includes real-time data for Forex. Futures and stocks are provided with a 15-minute delay. For several stock exchanges, only EOD is displayed. An internal trading account for simulated trading is pre-configured and can be manually connected.

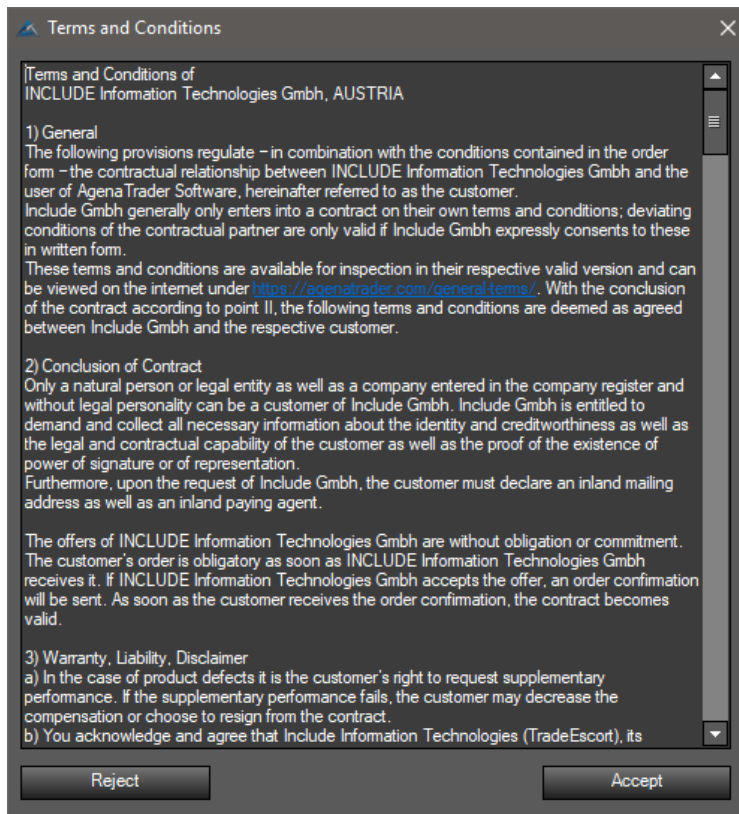
Option 3: If you already have a broker or data feed account with a partner, then this option enables you to enter the login details in AgenaTrader and create a connection. The connection is set up automatically. Attention! Certain accounts require separate software that must be installed in advance.

Please note! There is a separate connection guide for each connection.

<https://agenatrader.com/agenaspace-online-software-training/>



After concluding the setup input for the data feed and broker, AgenaTrader starts up. Read and accept the Terms & Conditions in order to load the workspace. If you do not accept the conditions, AgenaTrader closes automatically.









## The workspace

The main menu bar in the upper area contains all the functions that you can call up with AgenaTrader. It consists of several drop-down menus as well as a toolbar. All functions from the toolbar are also contained in the drop-down menus. However, the toolbar allows for easy access to functions as soon as you have familiarized yourself with the symbols.



Located in the lower area is the status bar:



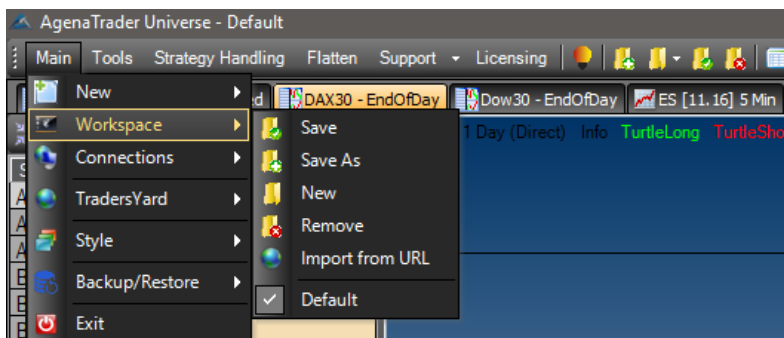
Here you will find a display for data and brokerage. As soon as a connection has been activated, the connection is displayed on the left. Located on the right-hand side are the progress bar for the loading of the data as well as warnings from the log. The general status of the system, internet, CPU and TradersYard is also displayed here, next to the version number. If updates are available, the download is shown next to the version number.



The area in the middle can be arranged according to your individual needs. This is where charts are opened and trading information is loaded or further functions are shown. Each tab can be detached. This gives you the possibility to shift charts and other windows to multiple monitors.



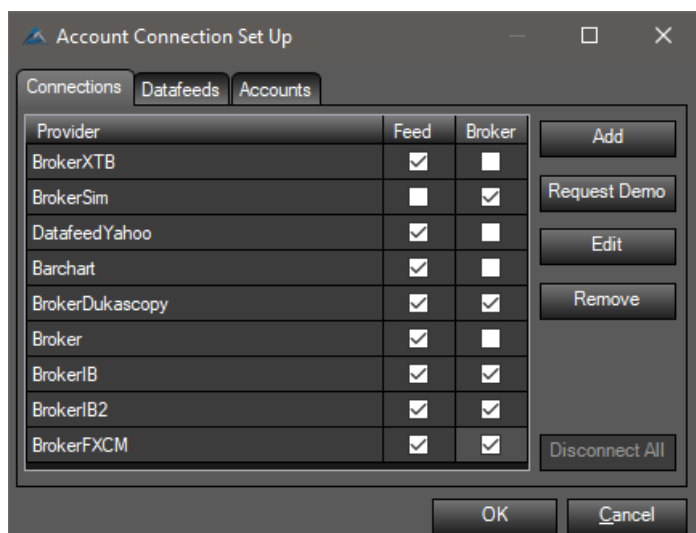
All your changes can be saved as a workspace. It is possible to set up an unlimited number of workspaces for various purposes.





## Setting up and connecting a new broker and data feed

Open the account connection settings with this symbol



**Add:** Add a new broker or data feed connection.

**Edit:** Edit an existing broker or data feed connection.

**Request demo:** Enables the automatic installation of a demo data feed from TaiPan (Lenz + Partner) or Barchart.

**Delete:** Remove an existing broker or data feed connection.

**Connections:** list of all broker and data feed connection

*DF:* check and activate every connection that you would like to use as a data feed

*Broker:* check and activate every connection that you would like to use as a broker

**Data feeds:** list of all data feed connections

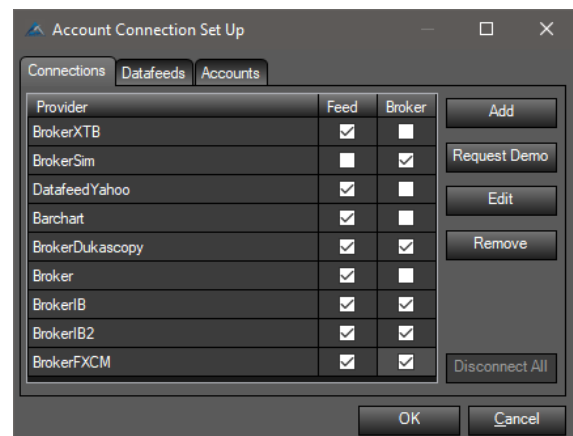
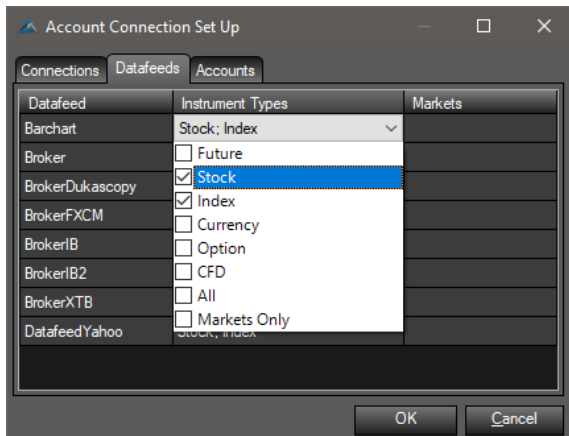
**Accounts:** list of all broker connections

Please take a look at our connection guides in our education portal:

<https://agenatrader.com/agenaspace-online-software-training/>

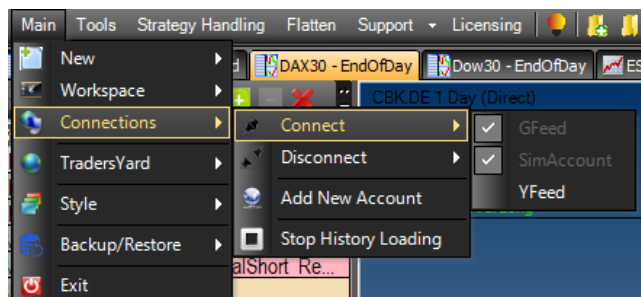


After the setup, your new connection appears in the connections tab. Here you can decide whether you would like to use this connection as a data feed (DF) or broker account (broker). Every connection that you set as a data feed is displayed in the data feed tab, and every broker connection is displayed in the accounts tab.



In the data feeds and accounts tabs you can set which instruments you would like to receive (data feed) and which you would like to trade (accounts).

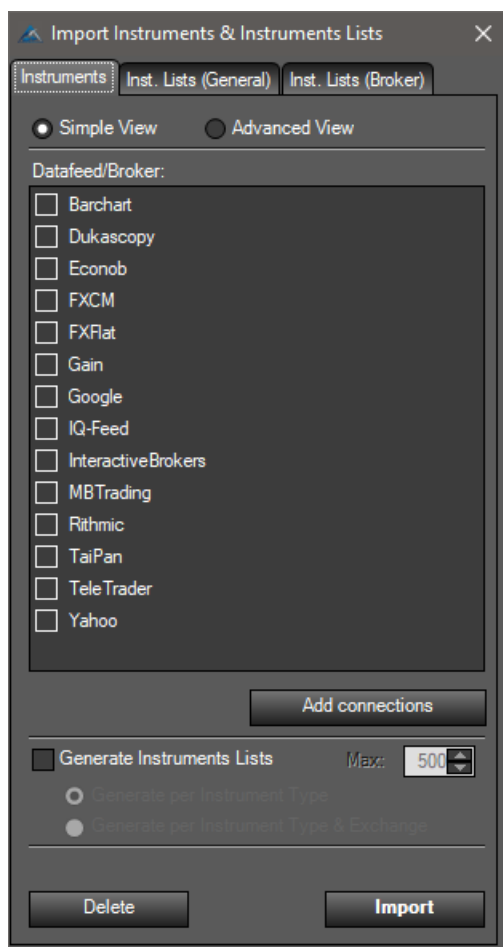
To create a connection, please go to *Main->Connections->Connect* and select your connection.



For further details, please open our wiki at <https://agenatrader.com/wiki/> and search for “data feeds” and “multi-broker settings”. These settings are crucial for the smooth operation of the multi-brokerage in AgenaTrader.



## Instruments and markets: import mappings



Within the instrument mapping tab, you can import the symbol mappings for the subscribed data feed providers. If an instrument already exists in the Instrument Escort, the mapping definition is added. If not, the instrument is first registered.

*Simple view:* this allows you to import the symbol mappings for the subscribed data feed providers

*Advanced view:* provides more details (data feed/broker, instrument types, stock exchanges)

*Generate instrument lists:* this allows you to automatically generate instrument type and instrument type & exchange.

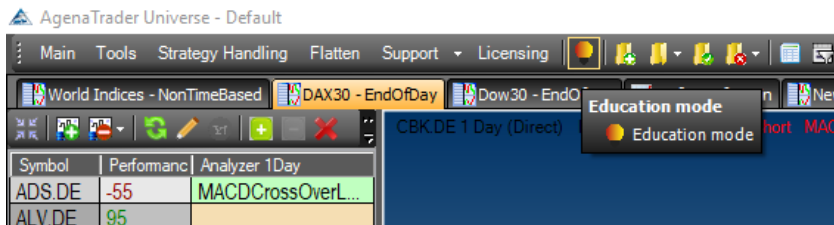
*Inst. lists (general):* in this tab you can import general symbol mapping lists

*Inst. lists (broker):* here you can import specific symbol mappings lists for each broker

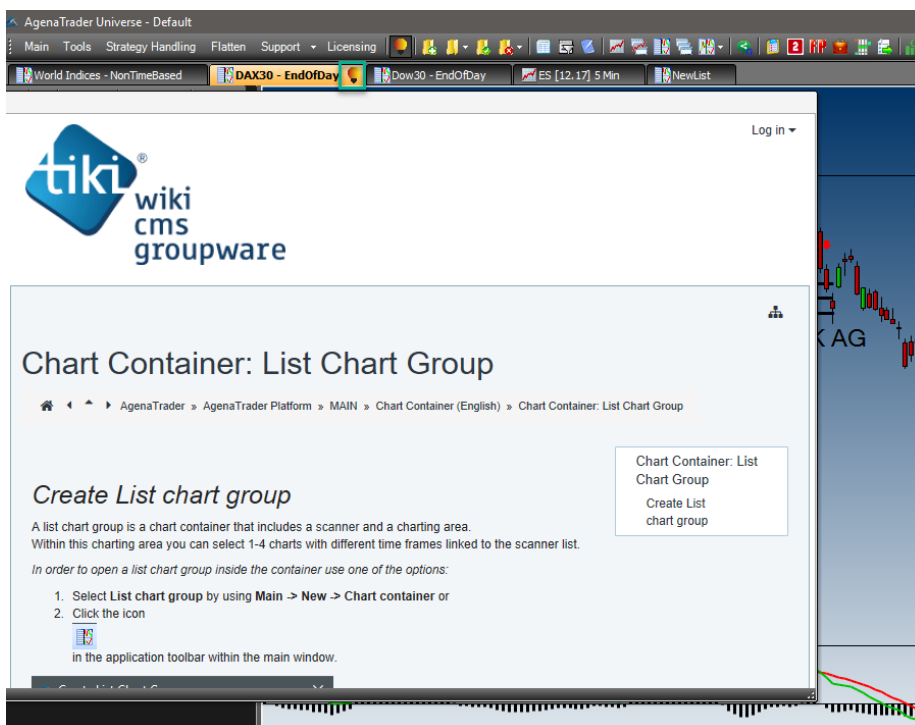


## Education mode (software training)

To make it possible for you to quickly and easily access information about individual functions, we created the education mode. When the lightbulb in the main menu bar is activated, each open and active window in AgenaTrader also shows a lightbulb.

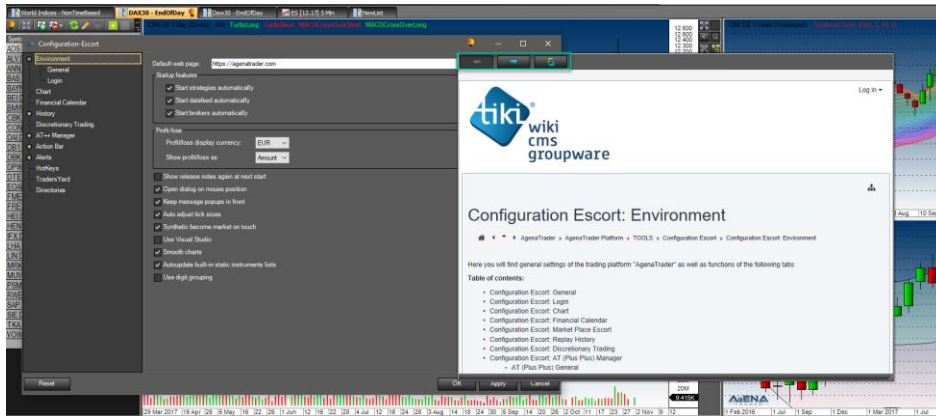


With a click on the lightbulb, the online help (wiki) opens up with the corresponding article.





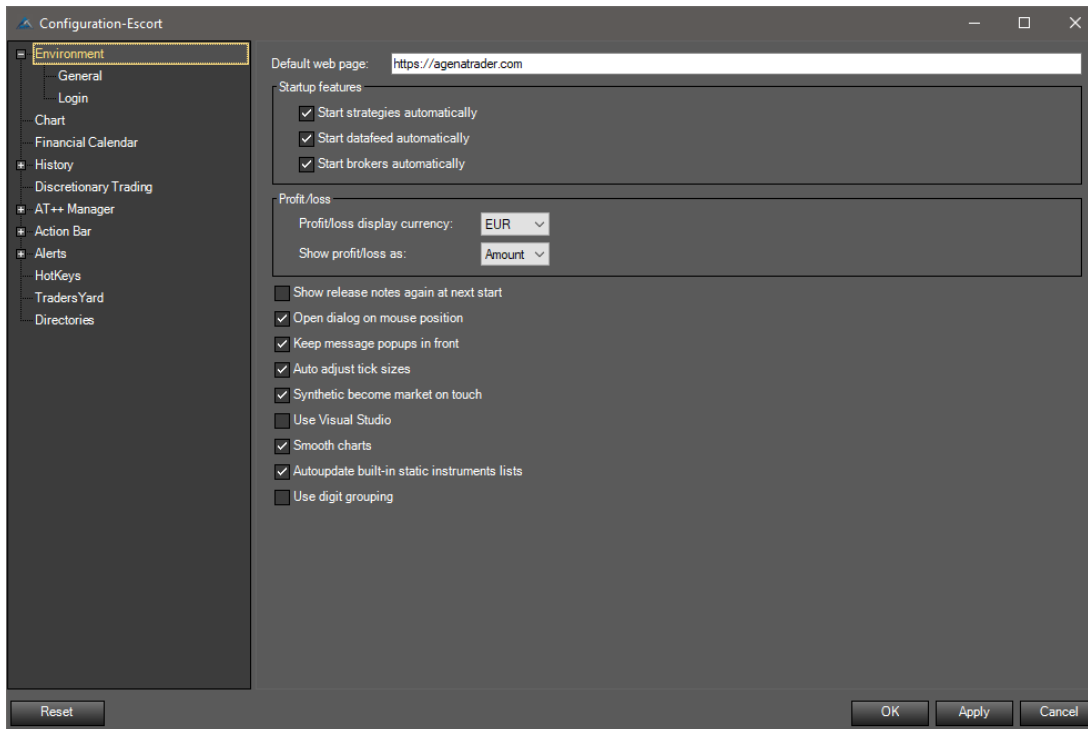
If there are several articles for one function, you will find a navigation bar at the upper end of the article.





## Configuration Escort: general settings

Principally, all default values are set and the options in this menu only offer small optimizations. However, two important settings should be made.



**Start-up properties:** use the checkboxes to select whether strategies, data feed and broker connections should automatically start up when you start AgenaTrader.

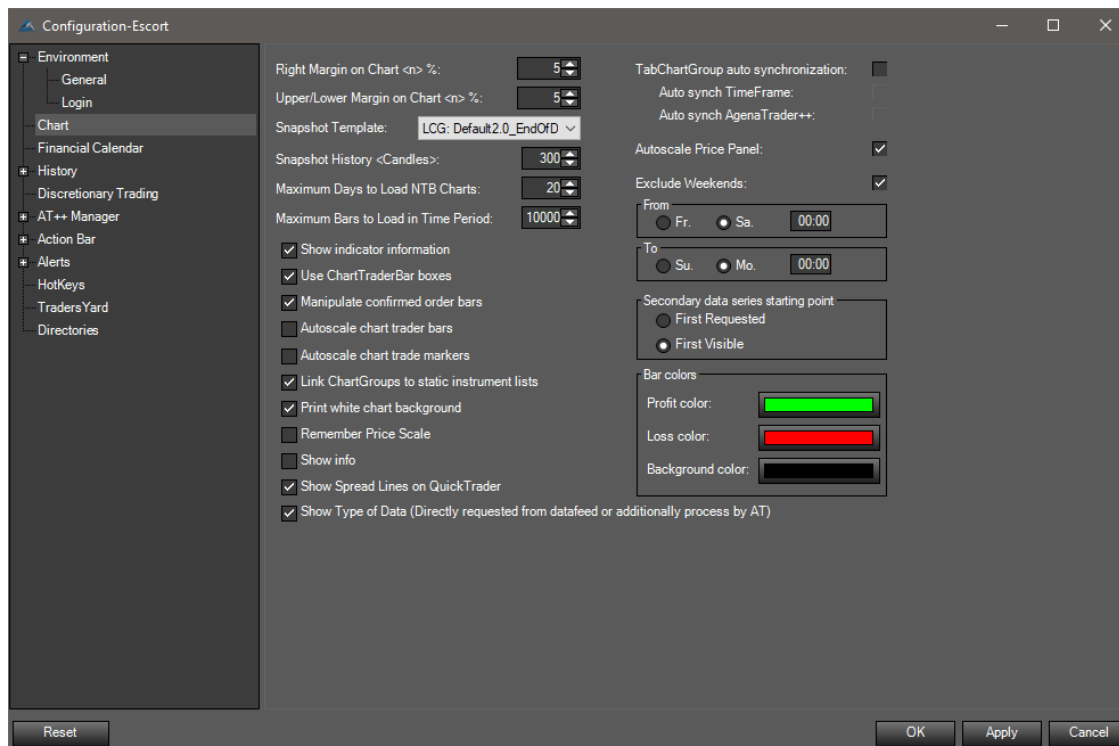
**Profit/loss:** select the currency in which the profit or loss should be calculated. You can also select the display to be shown as amount, ticks, risk or percent for the chart position bars.





## Configuration Escort: chart

The general chart settings are also predefined, but can be changed if you wish.



Right upper/lower free space in chart: here you can select a margin so that the chart assumes a certain distance from the edges.

Snapshot template: each trade that is closed creates a snapshot that is saved as an image on your PC. In a template, you can select how the snapshot should be formatted.

Load maximum days NTB and bars in the chart: in order to improve the performance when loading the chart, there is a maximum number of historical bars that can be selected here.

Exclude weekend: this option should be deactivated if you trade in 24-hour markets that also deliver data at the weekend.

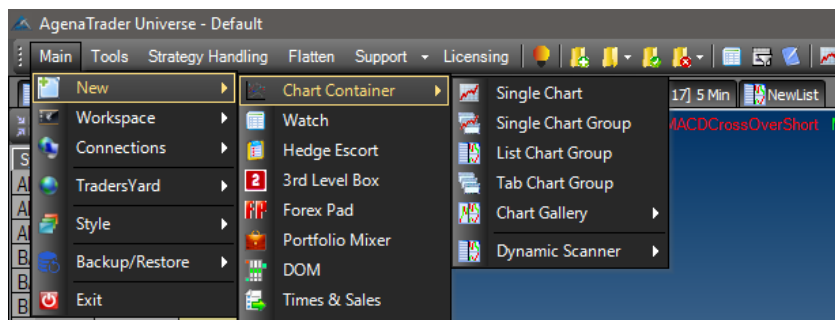
You can find further information on each individual point in the online help.



## Charts and technical analysis

### Charting options in AT:

Single chart, chart group, list chart group, tab chart group, chart gallery and dynamic scanner.



### Single chart:

One chart with one instrument in one timeframe.

### Single chart group:

Up to four charts with one instrument in up to four timeframes.

### List chart group:

A list of instruments in up to four timeframes. The charts are located next to the scanner.

Symbol	Bid	Ask	[%]Perf	Analyzer Escort
YM	18109	18110	1,00	
NQ	4815,25	4815,50	0,50	
AAPL	117,51	117,60	-0,31	
GOOG				

Symbol    Name    ISIN  
 GOOG, Alphabet Inc. Reg. Shares C, US  
 GOOG.CFD, ALPHABET INC-CL C,  
 GOOG.U, Alphabet Inc. Reg. Shares C, U  
 GOOG.US-XTB.CFD, Google Inc,  
 GOOGL, Alphabet Inc. Reg. Shares A, U  
 GOOGL.CFD, ALPHABET INC-CL A,  
 GOOGL.SW, Google, US38259P5089

A simple way to add instrument symbols to the list is to select an empty row in the list and to type in the symbol, the name or the ISIN. Using the Delete button on the keyboard, you can delete the selected instrument symbol once more.



### Tab chart group:

A list of instruments in up to four timeframes. Each instrument is opened as a separate tab.

### Chart gallery:

The chart gallery makes it possible to overcome the limitation of up to four charts per container, and allows you to load an unlimited number of timeframes per instrument.

### Dynamic scanner:

This function can only be used with an Andromeda version. It is a chart container that gathers all scans from the loaded Analyzer Escorts and shows them at a glance.



## Working and navigating in the chart

Located at the upper end of the chart is the chart toolbar. This is where you can find all working tools that can be used in the chart. You will find an explicit explanation of each symbol using the lightbulb on the left-hand side.



## Working with the mouse and keyboard

Mouse wheel	time axis zoom
Ctrl + mouse wheel	price axis zoom
Click and hold left mouse button	a data box for the selected candle is displayed
Right mouse button	context menu
Right mouse button and select area	zooms in on the selected area



Click and hold Ctrl + left mouse button and move in chart	this allows you to freely move the prices in the chart
Move price axis	click and hold the left mouse button over the price axis to shift it upwards or downwards
Move time axis	click and hold the left mouse button over the time axis to shift it to the left or right

Further navigation options:

When the mouse pointer is located in the time axis, you can use the mouse wheel to scroll the chart to the left or right. This also applies to the price axis. There, the chart is scrolled upwards or downwards.



## General chart settings

Instrument: search for the symbol.

Periodicity: select timeframe or data series.

Interval: select the interval of the timeframe.

Period: setting for histories.

Number of candles: 500 bars means that 500 candles of a certain periodicity are loaded.

Time interval: select the calendar-based time interval for loading the histories.

Template: opens a chart template with predefined settings.



**Create List Chart Group**

Instruments List:   Fav.

Time Frames

Bars count

Time period

End:

Maximum Bars Loaded:

Predefined

	Time Frame
<input type="checkbox"/>	1 Min
<input type="checkbox"/>	5 Min
<input type="checkbox"/>	10 Min
<input type="checkbox"/>	15 Min
<input type="checkbox"/>	30 Min
<input type="checkbox"/>	1 Hour
<input type="checkbox"/>	4 Hour

Template:

Instrument list: a list of instruments is selected.

Favor.: saves the settings you have made as favorite settings.

Timeframe: setting for histories.

Number of candles: 500 bars means that 500 candles of a certain periodicity are loaded.

Time interval: select calendar-based time interval for loading the histories.

Maximum loaded bars: limits the loading of the histories to improve the performance.

Timeframe: up to four different timeframes or data series can be selected.

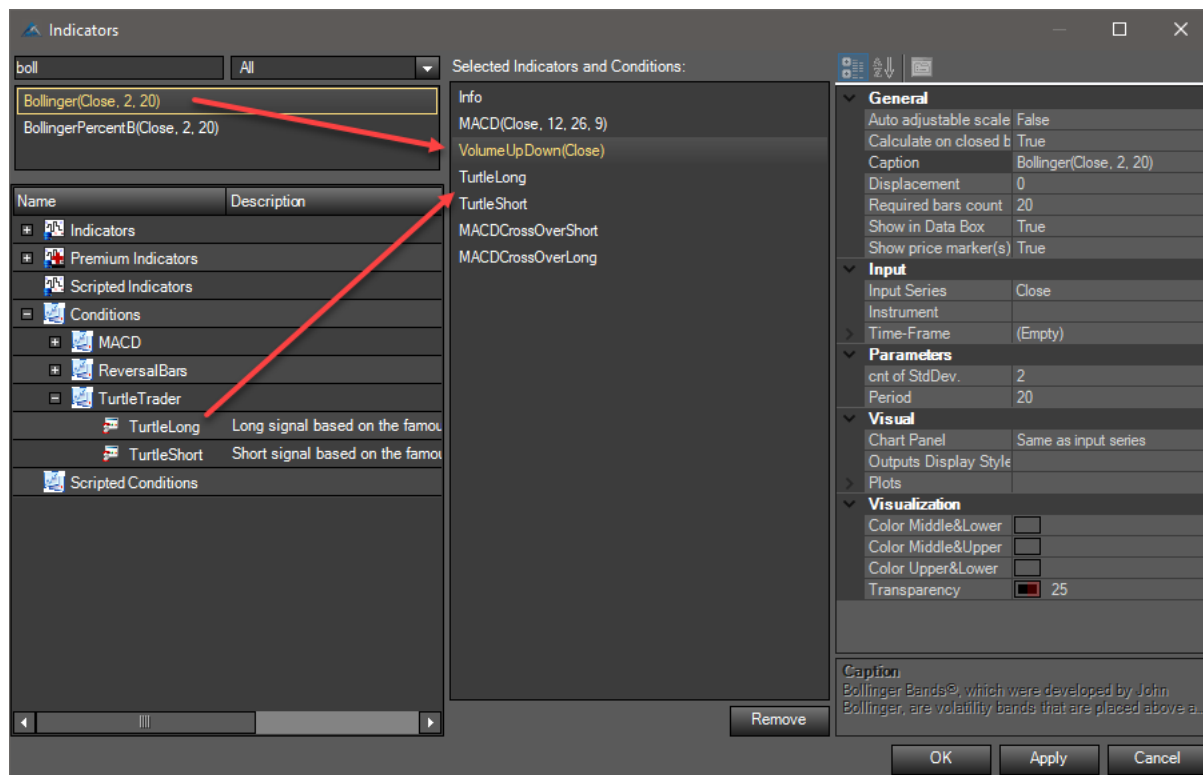
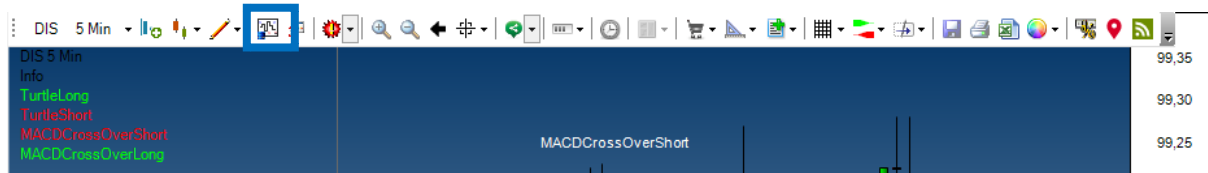
Add: Makes it possible to add further data series / timeframes.

Template: opens a chart group template with predefined settings.



## Add indicators and conditions

Open the indicator dialog window using the chart toolbar:



This area is where all available indicators are displayed.

- Over 110 standard indicators are already included in this version. Premium indicators are only available if you own the corresponding add-on (<https://shop.tradersyard.com/>).
- Scripted Indicators displays entries if you have scripted indicators with AgenaTrader.
- Conditions contains all the conditions you have created using the Condition Escort.
- Programmed Conditions displays entries if you have scripted conditions with AgenaTrader.





With a double click, the selected indicator is added to the list and your chart.

**SELECTED INDICATOR LIST:**

This area displays all indicators and conditions that have been added from the indicator list.

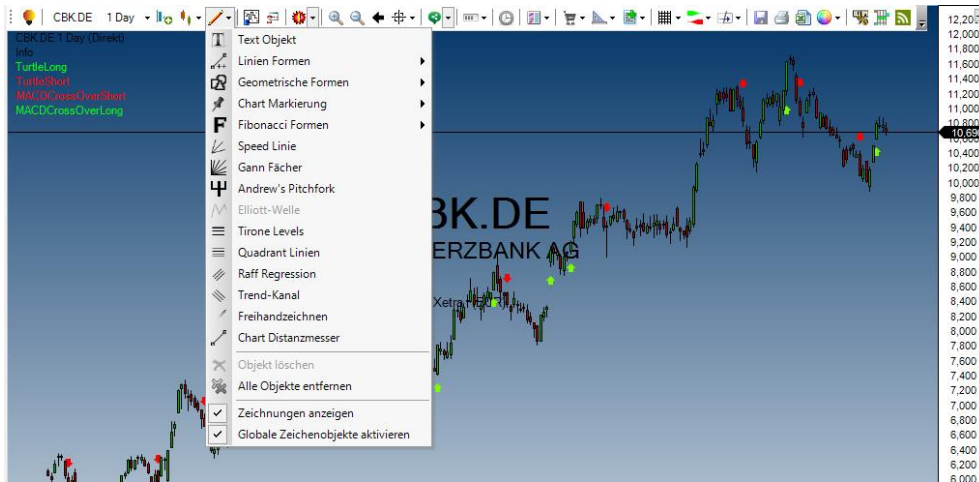
**INDICATOR PARAMETERS:**

Displays the indicator-specific settings that are available for editing. For this, the loaded indicator must be selected in the yellow area.

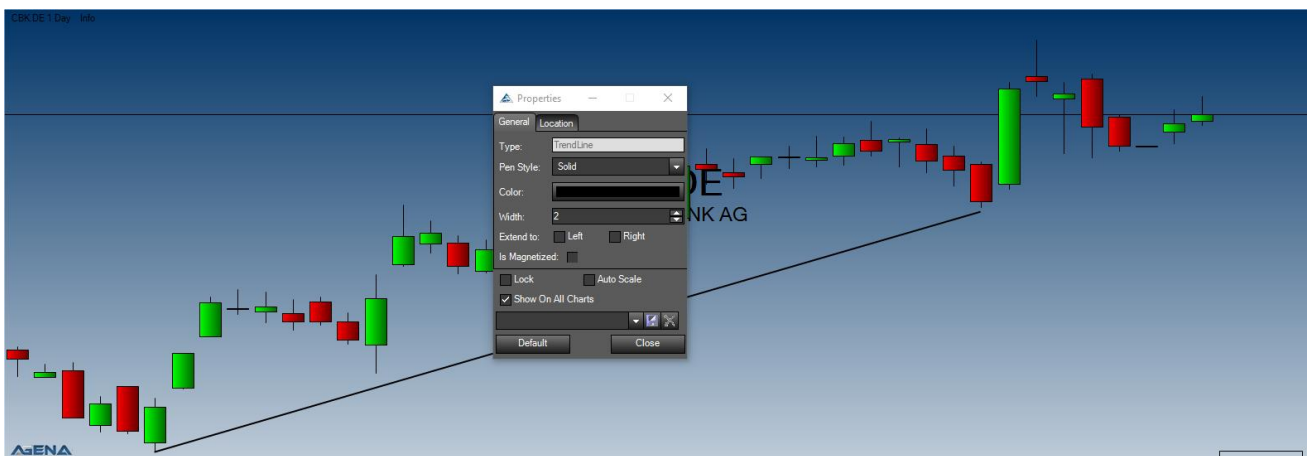
As soon as you click the button *Apply* or *OK*, the changes are applied to the chart. If you click *Cancel*, the window closes without saving the changes.



## Apply drawing objects



After selecting a drawing object, the mouse pointer becomes a pen. By holding down the mouse button, you can place a drawing on the chart. Right-click deactivates the drawing object and the normal mouse pointer is available once more. After an object is drawn in the chart, such as a trend line, you can double-click to open the settings window, allowing you to customize the drawing.





## Action bar



- navigation area; you can increase the chart to full screen
- anchor the action bar so that it is displayed permanently
- open/close the OrderPad
- activate the QuickTrader
- activate the OrderPad
- and activate the DOM incl. T&S list
- with the tools icon, the settings are opened and the action bar can be adjusted
- opens Google fundamental data for the loaded instrument
- with the blue arrow, you can switch between

timeframes very easily

and you can also add quick buttons for instrument lists to this area, where you can insert the currently displayed symbol into this list

In the middle AT++ entry area, you can set each one of your entries so that these are displayed as quick buttons here. B () is used for a long position; S () for a short position.

In the lower indicator area, you can set all your indicators and conditions so that they are displayed as quick buttons. When you hover over an indicator with the mouse, it is displayed until you move the mouse away. When you click on an indicator button, this indicator is displayed in the chart until you click on the button once again.



To access the action bar settings (2 methods):

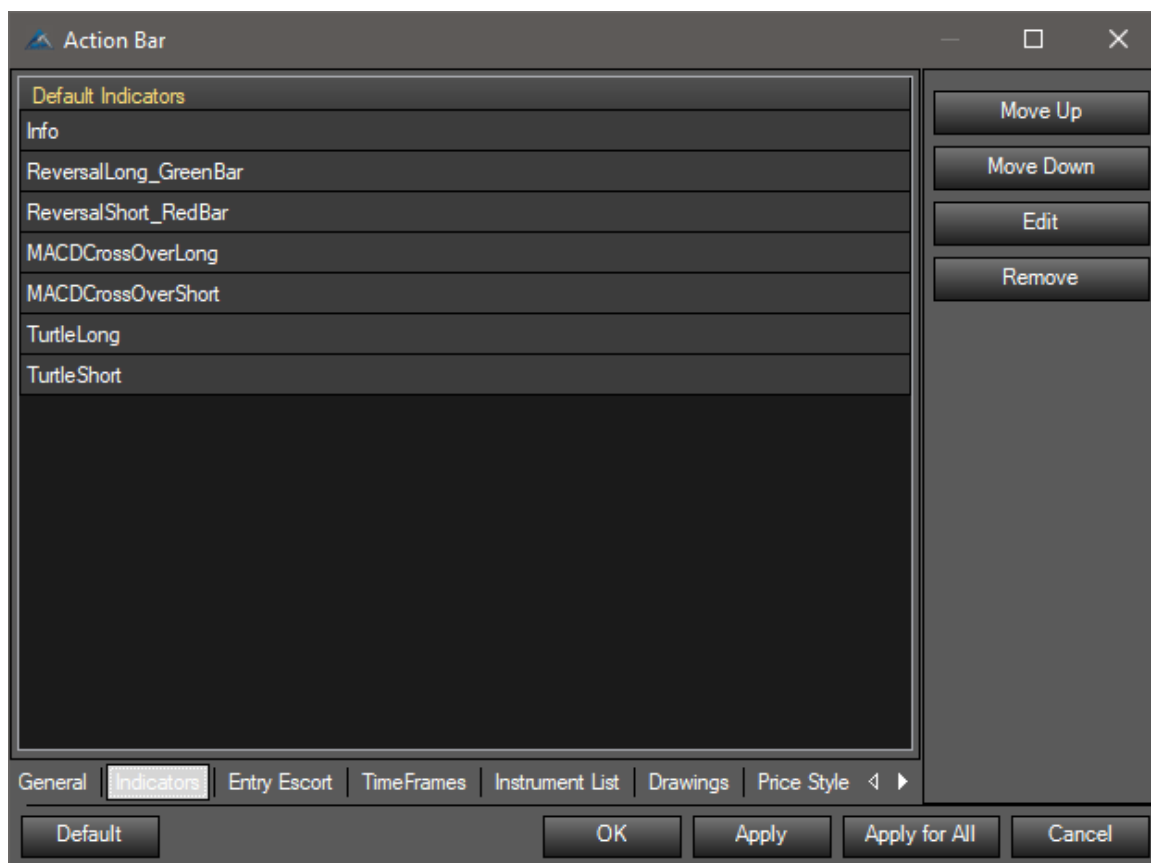
1. In the main menu, select *Tools*, then *Settings* and *Configuration Escort*. Open the tab *ActionBar*. Settings that are made here are generally transferred to all action bars in the current workplace.
2. Right-click in the action bar or click on the tool icon. This is where you can carry out settings just for this individual chart.

Workflow tip:

Add an instrument list to the action bar. The currently opened chart symbol can quickly and easily be added to or removed from the instrument list button of the action bar.



To add an indicator to the action bar, open the action bar settings as described on page 32 and navigate to the indicator tab. There, select *Edit*, then the indicator window opens up and you can select your indicators as described above.



For further details on this, such as how to use indicators in the chart and the action bar, please visit our education channel <https://agenatrader.com/agenaspace-online-software-training/>.



## Instrument Escort: instruments and lists



Search (left): enter the symbol (e.g. AAPL), the full name (Apple Inc.) or the ISIN number that you are searching for. Double-clicking on the search result selects the instrument.

The screenshot displays the 'Instruments' window. On the left, a search for 'aapl' is performed, showing a list of results. The 'Details' tab on the right provides comprehensive information for the selected instrument, AAPL. The 'Providers' table is as follows:

Provider	Symbol	Cont.	Comm.	Margin	Min Qty	Max Qty
AgenaTick	831814	↓	C		1	
TeleTrader	831814	↓	C		1	
Yahoo	AAPL	↓	C		1	
TaiPan	AAPL.Q	↓	C		1	
InteractiveBrokers	AAPL	↓	C		1	

Instruments and lists build menu (left): select individual instruments or entire instrument lists for further editing. For instrument lists, you can choose between *static lists* (created or edited by a user), *dynamic lists* (predefined lists that are automatically updated) and *screeener presets* (lists that are automatically updated based on scanning activities).

Details (right): add new instruments or edit existing instruments in the details tab.

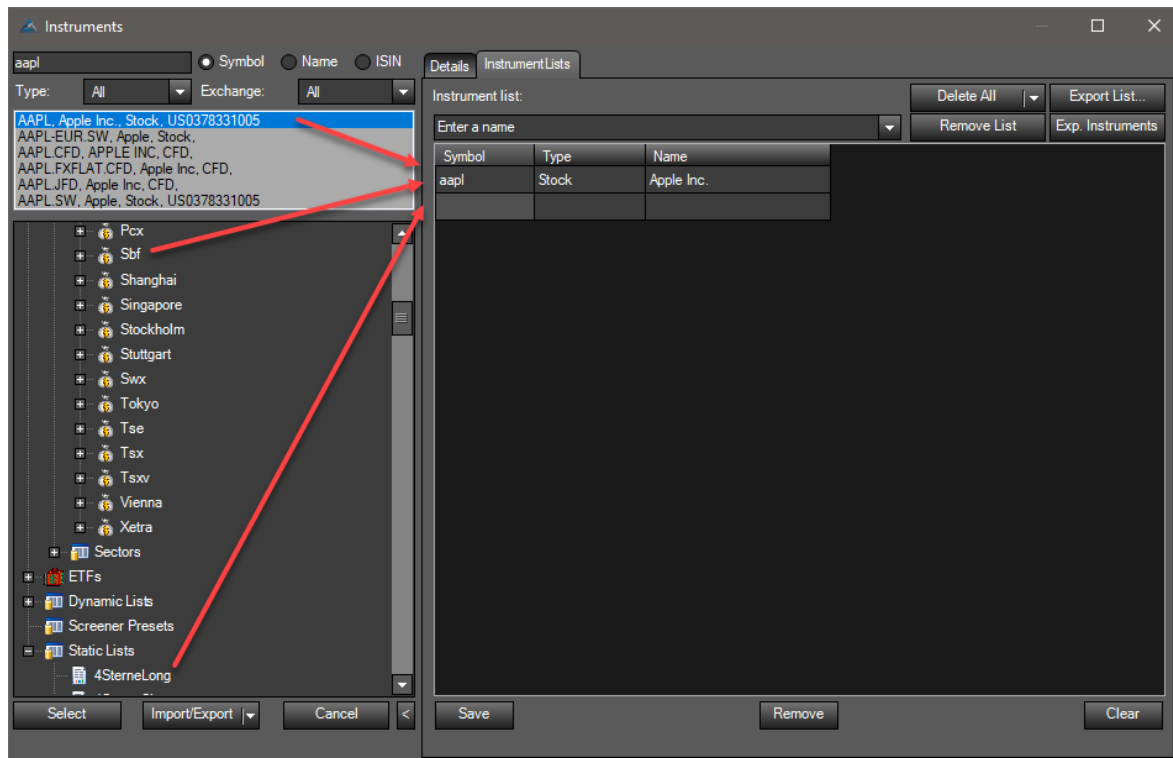
*Details – providers and mappings (below)*: here you will find symbol-specific mappings for each broker and data feed. If your broker or data feed is not shown here, you have probably not imported the mappings for this symbol yet.



## Instrument lists

In the instrument lists tab (right) you can create lists or edit existing lists. To add an instrument to a list, you can use one of the following methods:

- Enter the symbol manually in the cell highlighted in blue.



- Use the search to type in the symbol, name or ISIN and use the filter function. The located instrument can then be loaded into the list with a double-click or using drag & drop.
- Select the desired instrument or list and use drag & drop to move it from the left-hand side to the right-hand list.

*(Clicking on the build menu selects an instrument or an instrument list, which can then be shifted into a new list using drag & drop.)*

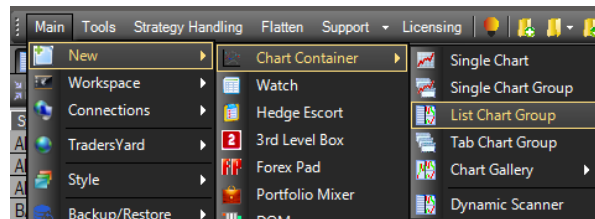


# Scanner

The scanner is part of the list chart group chart container, and can display self-programmed conditions in multiple timeframes. It can also scan for conditions that were created in the Condition Escort. Signals that are found are displayed as **1** for long entries and **(minus)-1** for short entries. You can then manually enter a discretionary trade. The signals from the Analyzer columns are linked to a trading setup and are activated with a double-click in the chart. You can find further information on signals and trading setups down below under AT++ Manager.

You can access the scanner by creating:

- a watch list (*Main -> New -> Watch*) or
- a list chart group (LCG)  
*Main -> New -> Chart Container -> ListChartGroup.*



Symbol	Name	MainSector	Ask	Bid	Last	RSI	Chart	MTPProOu...	MTPProEar...	MTPProRe...	Analyzer 1...	Analyzer ...	Analyzer ...
AAPL	Apple Inc.	Consumer Goods	159.98	159.95	159.96	51.55		0	0	0		MTPProRever...	
AXP	American Express Co.	Financial	87.44	87.43	87.44	61.10	Creating char...	0	0	0	MTPProOutsid...	MTPProRever...	
BA	Boeing Co. (The)	Industrial Goods	252.16	252.12	252.11	72.20		0	0	0	MTPProOutsid...		MTPProOutsid...
CAT	Caterpillar Inc.	Industrial Goods	123.72	123.70	123.72	70.95	Creating char...	0	0	0	MTPProEarlyP...		MTPProOutsid...
CSCO	Cisco Systems, Inc.	Technology	32.58	32.57	32.58	58.35		0	0	0	MTPProOutsid...	MTPProOutsid...	MTPProOutsid...
CVX	Chevron Corporation	Basic Materials	114.77	114.76	114.77	74.10	Creating char...	0	0	0			
DD S	Du Pont (E. I.) de Nemours & Co	Basic Materials	84.97	84.33	83.93	59.75		0	0	0	MTPProOutsid...		
DIS	Walt Disney Company (The)	Services	98.09	98.08	98.08	38.60	Creating char...	1	0	0			MTPProOutsid...
GE S	General Electric Co	Industrial Goods	24.13	24.12	24.13	38.65		1	0	0			MTPProRever...
GS	Goldman Sachs Group, Inc.	Financial	227.74	227.67	227.69	53.65	Creating char...	0	0	0	MTPProOutsid...	MTPProRever...	
HD	Home Depot Inc	Services	158.50	158.48	158.49	61.95		0	0	0			
IBM	International Business Machine...	Technology	144.92	144.90	144.92	53.10	Creating char...	-1	0	0			
INTC	Intel Corporation	Technology	37.10	37.09	37.10	70.55		0	0	0			MTPProOutsid...
JNJ	Johnson & Johnson	Healthcare	135.07	135.05	135.12	57.95		0	0	1	MTPProEarlyP...	MTPProRever...	MTPProOutsid...
JPM	JPMorgan Chase & Co.	Financial	92.74	92.73	92.74	53.90		0	0	0			MTPProOutsid...
KO	Coca-Cola Co (The)	Consumer Goods	46.03	46.02	46.03	55.20	Creating char...	0	0	0			
MCD	McDonald's Corp	Services	157.27	157.25	157.26	45.95	Creating char...	0	0	0			
MMM	3M Co	Industrial Goods	213.28	213.23	213.24	70.40	Creating char...	0	0	1	MTPProOutsid...	MTPProRever...	MTPProRever...
MRK	Merck & Co., Inc	Healthcare	65.94	65.93	65.94	75.20		-1	0	0	MTPProOutsid...		
MSFT	Microsoft Corporation	Technology	75.85	75.84	75.85	62.35	Creating char...	0	0	0		MTPProOutsid...	MTPProOutsid...
NKE	NIKE Inc	Consumer Goods	53.81	53.80	53.81	44.85		0	0	0			
PFE	Pfizer Inc	Healthcare	35.34	35.33	35.34	69.45	Creating char...	0	0	0			
PG	Procter & Gamble Co.	Consumer Goods	93.45	93.44	93.44	61.15	Creating char...	0	0	0			MTPProEarlyP...
TRV	Travelers Companies Inc (The)	Financial	120.84	120.81	120.82	44.25	Creating char...	0	0	0			
UNH	UnitedHealth Group Inc	Healthcare	198.24	198.19	198.20	58.35	Creating char...	-1	0	0			
UTX	United Technologies Corp.	Industrial Goods	113.06	113.02	113.06	44.90	Creating char...	0	0	0			
V	Visa Inc.	Financial	105.40	105.39	105.40	62.20	Creating char...	0	0	0			
VZ	Verizon Communications Inc	Technology	47.80	47.79	47.80	55.70		0	0	0	MTPProEarlyP3		
WMT	Wal-Mart Stores, Inc.	Services	80.84	80.83	80.84	57.80	Creating char...	0	0	0			
XOM	Exxon Mobil Corp.	Basic Materials	79.97	79.96	79.97	65.85		0	0	0			





The scanner columns can have various colors:

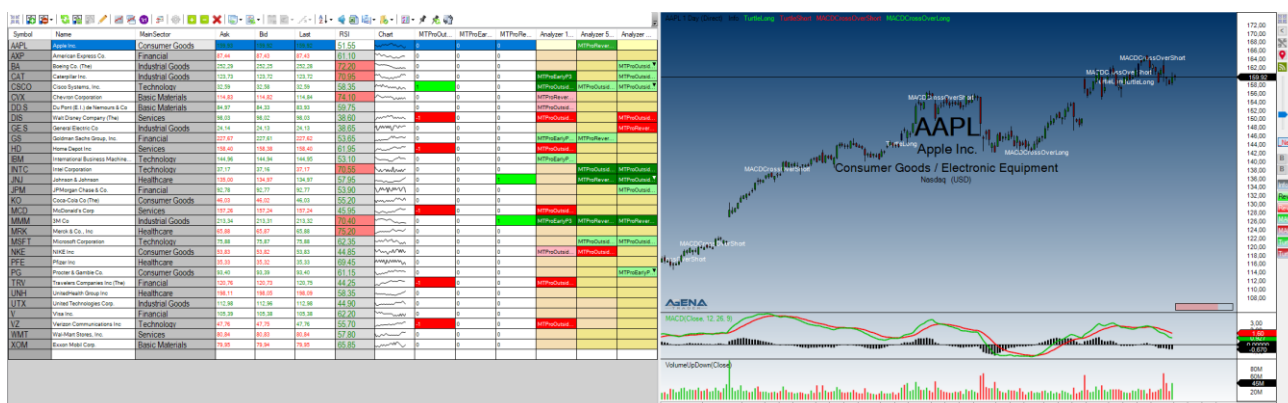
Green: indicates a long position

Red: indicates a short position

Blue: indicates suggested but not confirmed orders

All settings options for the scanner can be found using the toolbar. A right-click opens the context menu. All functions from the context menu are also located in the toolbar. If you carry out changes in the Entry Escort list within the Setup Escort activation tab, the scanner for the LCG or watch list must be reloaded.

View of scanner and chart:





## Discretionary trading

### Standard trading pad

Using the action bar on the right next to each chart, you can open the standard trading pad. The pad enables you to make order settings and send them to the broker simply by clicking.



**Quantity:** selects the order size

**Buy or sell button:** creates an order that is immediately sent to the broker

### Order types:

#### Market:

Order without specification of a price limit, where the entire order is to be carried out as quickly as possible at the next possible price. With market orders, however, due to a slippage you run the risk of getting a worse price than what the original entry price was set at. Particularly for illiquid stocks, this can get expensive.



### Limit:

Order with specification of a price limit.

- A limited buy order should be executed at the price limit or at a lower price.
- A limited sell order should be executed at the price limit or at a higher price..

### Stop:

A stop order is characterized by the fact that – as soon as the specified price level is reached – it is automatically placed into the market (order book) as “best order” (market). This order type is therefore a combination of a stop with a market order.

### StopLimit:

A stop limit order is characterized by the fact that – as soon as the specified price level is reached – it is automatically placed into the market (order book) as a limited order (limit). This order type is a combination of a stop with a limit order.

### **Order expiry:**

GTC (Good till Cancel): an order is valid until it is manually closed.

GTD (Good till Date): the order has an expiry date and time.

Day: the order is only valid for one day.

You can read about further settings in the [online help \(wiki\)](#).



## Order connections

In AgenaTrader it is possible to map out complex order constructs.

For this, the following order connections are available:

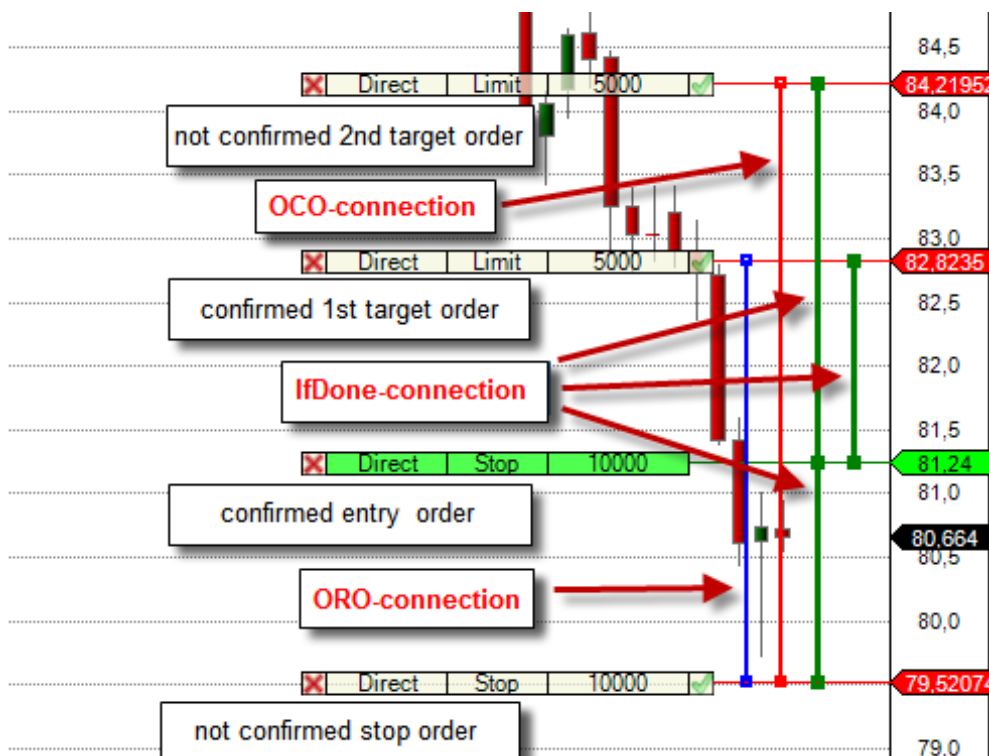
- OCO (One cancels Other): means that as soon as one order is executed, the second connected order is deleted.
- IfDone: means that as soon as one order is executed, the second connected order is activated.
- ORO (One reduces Other): means that as soon as one order is executed, the order size of the second order is reduced by the order volume of the first order.

OCO (red): Ctrl+left click

ORO (blue): Ctrl+Alt+left click

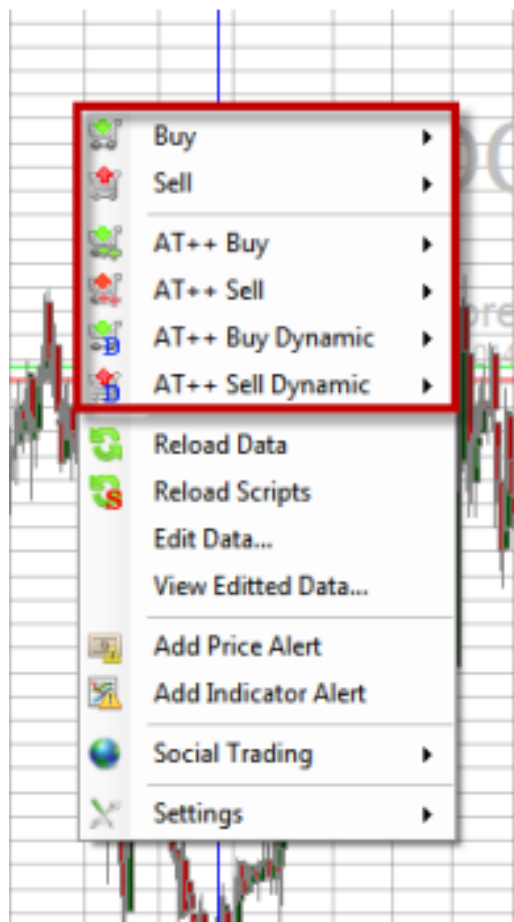
IfDone (green): Alt+left click

Example with all order connections:





## Chart trading



### Discretionary trading

There are various tools at your disposal that make it possible for you to carry out discretionary trading. One of these is the chart trading. With a right-click in the chart, you open up the context menu. Select Buy or Sell and the order type. The created orders can be linked to each other by means of so-called IfDone, OCO and ORO connections. You can find further informative material on this topic in our online help.

### AT++






(semi-automated and fully automated trading)  
AT++ orders can be created just the same as normal orders. In addition, you can also select

a strategy that was defined in the Setup Escort. This strategy automatically creates the above-named connections as well as the option of a trailing stop. You can find more information on AT++ further down in this document.



## Further discretionary trading tools

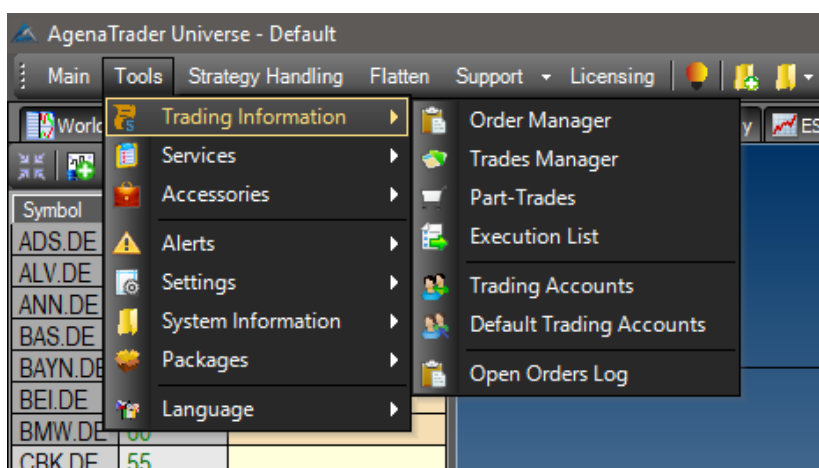








- ✓ Depth of Market (DOM ) offers full functionality for placing orders in the market.
- ✓ Times&Sales list  displays price, volume and the most recently traded time.
- ✓ ForexPad<sup>FP</sup> offers quickly executed entries in long or short positions.
- ✓ 3<sup>rd</sup> Level Box  can be used as a trading pad.
- ✓ QuickTrader  makes it possible for the user to rapidly enter orders and strategies directly in the chart. It is located in the action bar.
- ✓ Hot Keys  key combinations for trading can be created using the Configuration Escort in order to place orders.



## Trading information

The trading information is accessed using the main menu toolbar in the “Tools” category. The trading information is a logical grouping of all tabs that are relevant for trading. This grouping can be defined and customized according to your wishes.



- Order manager  contains all currently active or already executed orders.
- Trades manager  contains the individual trading decisions that were made in various timeframes.
- Partial trades  separates trade fragments, e.g. from the entry to target 1.
- Executions  displays the order executions (as well as partial executions).
- Trading accounts  displays detailed account information related to the currently connected broker.
- Standard trading accounts: if an IB FA account is connected, this makes it possible to switch between the main and sub-accounts.
- The order log  provides you with quick access to the right data for orders in case particular errors occur.



View of the trading information in the workspace:

Accounts Trades (2) Part-Trades Order Manager Executions																			
Filter																			
Last Change		From: 11/ 2/201		To: 11/ 3/201		All Accounts		Apply											
Account	Excha	Type	Instrument Name	Symbol	Direction	Time Frame	Entry Time	Entry Reason	Entry Price	Entry AvgPrice	Quantity	Invest Value	Last Change	Exit Reason	Exit Price	Exit AvgPr	Volume Closed	Price	Exit Curre
1	SimAc...	Xetra	Stock	DEUT...	LHA.DE	Long	1 Day	11/3/...	Discret...	27.64	27.64	100	2.76...	11/3/...				27.63	
2	SimAc...	Xetra	Stock	DEUT...	DBK.DE	Long	1 Day	11/3/...	Discret...	14.63	14.63	100	1.46...	11/3/...				14.605	
Total																			

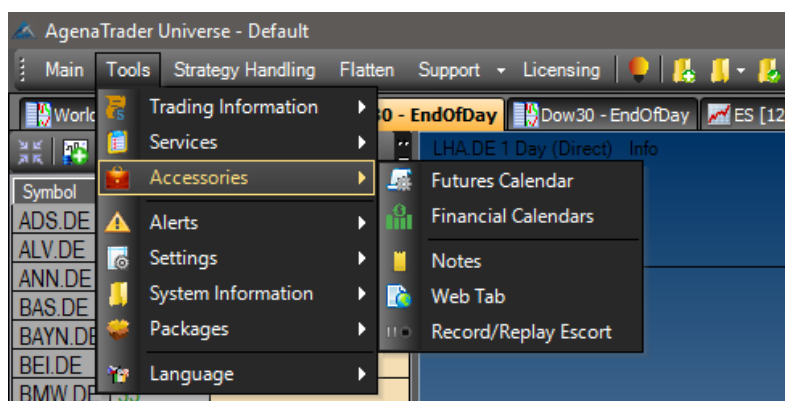




## Accessories and system information



The info center can be accessed from the main menu toolbar via the “Tools” category. The info center contains differently positioned tabs that the user can organize optimally according to his or her wishes.

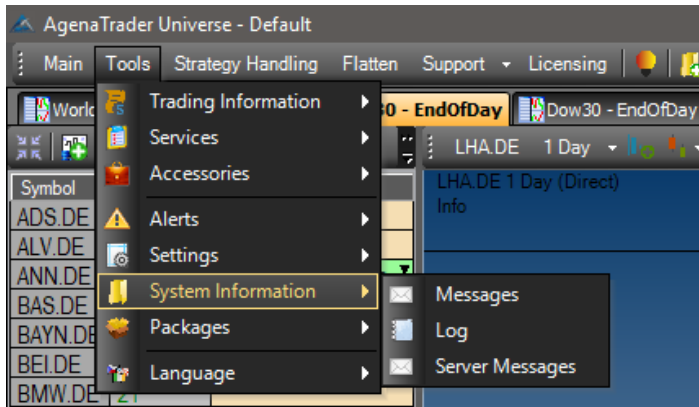
The following tabs can be placed in the info center:



- Notes 📝 with this, you can take notes on every trading day.
- Web tab 🌐 offers internet access in AgenaTrader without having to open a browser.
- With the futures calendar you can open all imported futures markets and the available contracts at a glance.
- The financial calendar displays economic data, earnings, holidays and dividend days. Alerts can be activated with just a few clicks on the symbols.




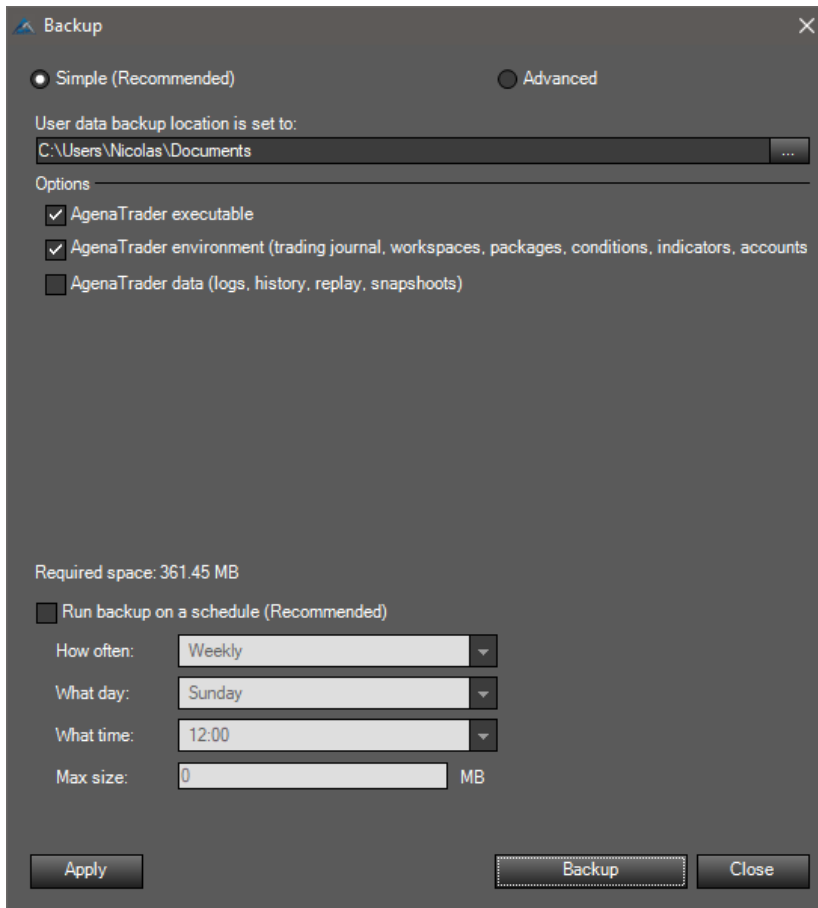
- Messages  contains various trading-specific information.
- Log  contains system and application-specific information.





## Support services

AgenaTrader offers you the option to create a backup  of the entire system. If you ever lose data due to unforeseeable circumstances, you can implement the most recently created backup and thereby restore lost data.



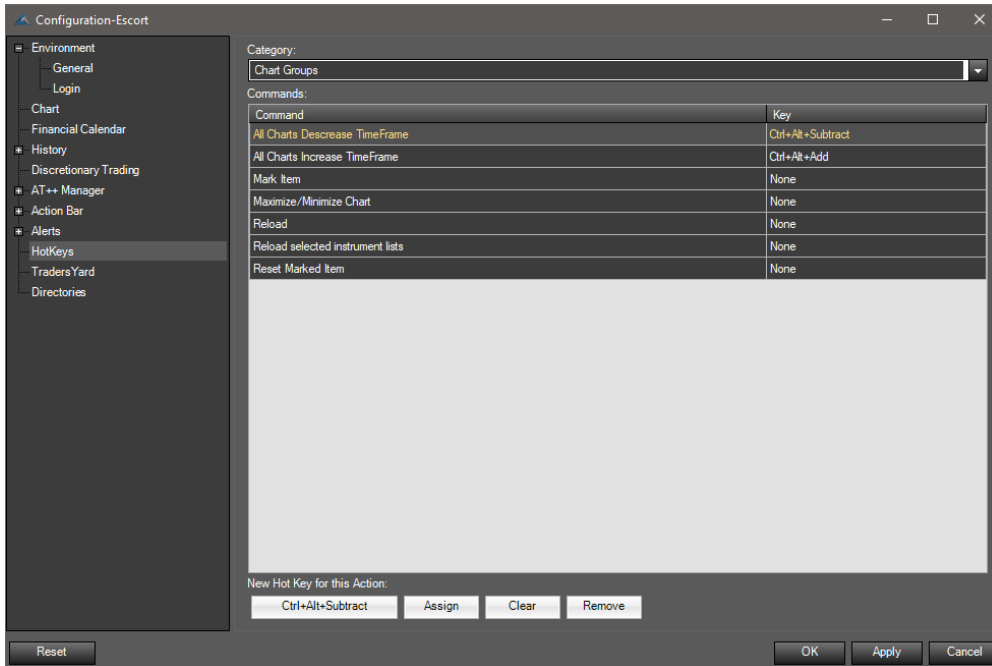
Using the simple mode, you can specify the location in which the backup should be saved, and organize a timetable for when the backup should be carried out (periodicity, date, time, size).

The advanced mode offers you more options. You can select packages (indicators, conditions and more) that should be saved.



## Hot keys

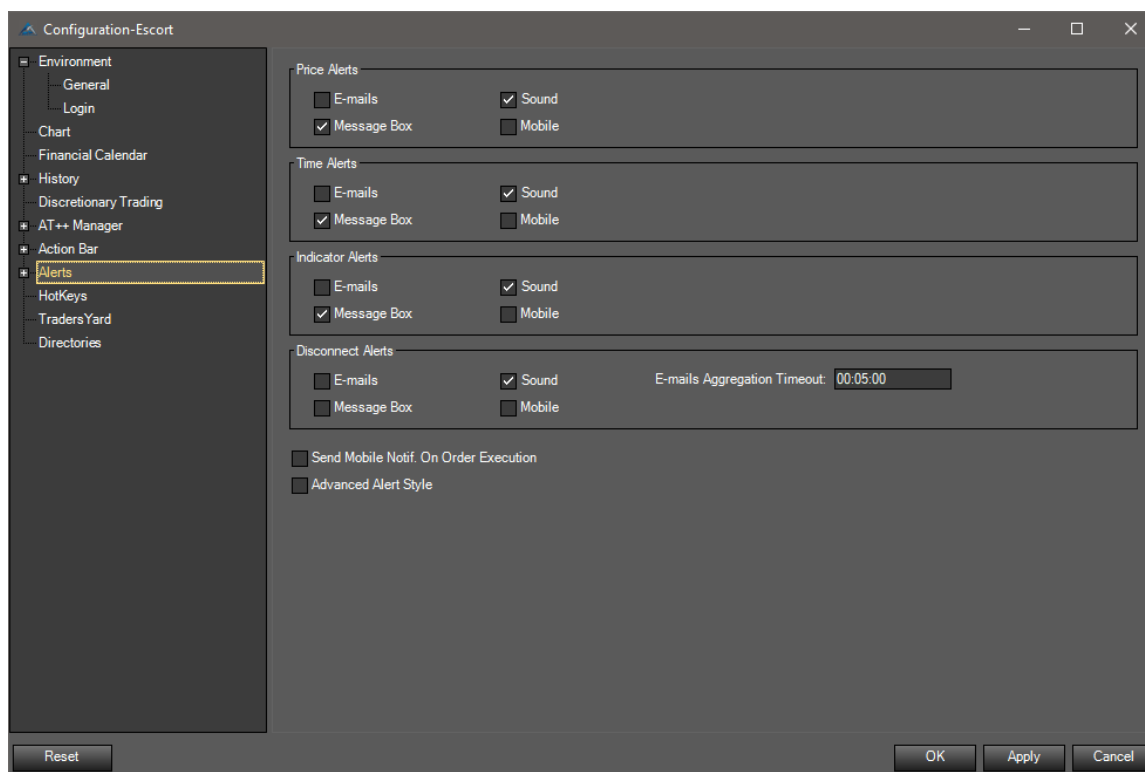
The hot keys are another great feature with which you can configure AgenaTrader for faster use. You can access the hot keys popup in the Configuration Escort menu.





## Alert settings

In the Configuration Escort you will find the alerts. Here you can configure alerts (price alerts, time alerts, indicator alerts, activate/deactivate alert).



- Emails: activates or deactivate the option to receive an email for each alert that is triggered.
- Message box: opens a popup when the price alert is triggered.
- Sound: activates sounds for the alert.
- Mobile: activates the Mobile Notifier (the AgenaTrader Notifier app for Google Android and Apple iOS Smartphones can be connected to AgenaTrader so that you receive status, alert and trade info).




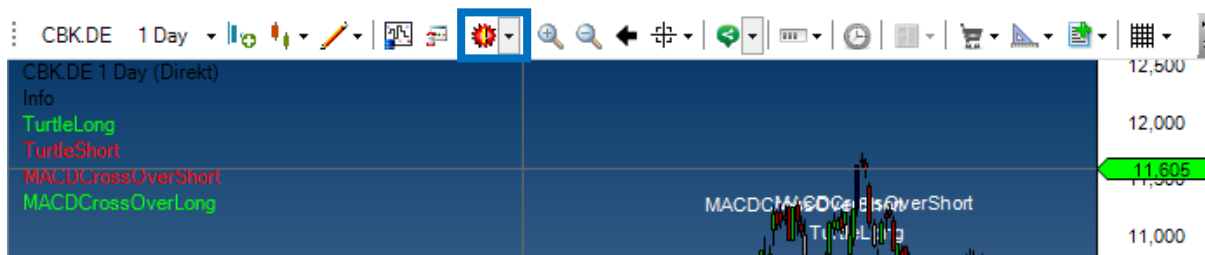
## Automated chart analysis and trading

### AgenaTrader Plus Plus (AT++)

AgenaTrader++ comprises several innovative functions for professional trading that make it possible to specify individual rules for an automated trading strategy.

This includes semi and fully automatic setup and trade management components, integrated risk and money management with automatic order size classification, the signal scanner (Analyzer) and further functions.

With a left-click on the  symbol within the chart toolbar, an AT++ strategy is made active. The arrow next to the symbol allows you to select a specific Analyzer session. A session contains the active AT++ strategies. However, an AT++ strategy is also automatically started when a signal from the scanner (Analyzer) is activated by double-clicking.



Before starting an AT++ strategy, however, it must first be configured.

### **The AT++ Manager contains and connects the following functions:**

#### Condition Escort:

Entry or exit signal and condition (drag & drop creation). Conditions can subsequently be scanned with the signal scanner (Analyzer Escort) in hundreds of markets simultaneously and in real time.

*You can find more information on this further down in this document.*



### Setup Escort:

This is where trading strategies are assigned to a condition of the Condition Escort. As an alternative, you can also configure manual trading strategies without a signal.

*You can find more information on this further down in this document.*

- This is where Analyzer sessions are created that can be added as a column in the signal scanner (Analyzer Escort). Subsequently, in an Analyzer session, the Entry Escorts (entry strategies) are then activated.
- Under configuration, following this, each Entry Escort is assigned a trading strategy. This involves a stop loss and target orders as well as an optional trailing stop loss that can be applied.
- All parameters are preconfigured and do not need to be changed. But you have the optional possibility to individually adjust the parameters. In this context, the BreakEvenStop is a very popular parameter that can be used.



### Risk and money management:

The settings defined here make it possible to calculate the order size automatically. This applies to every AT++ trading setup from the Setup Escort, regardless of which symbol you are trading. While in the Setup Escort, the risk per trade is calculated using the initial stop strategy, the risk management enables risk calculation based on your account size or a fixed sum.

### Signal scanner and Analyzer Escort:

A scanner is loaded either via the watch list or the list chart group. When you add an Analyzer, all active Entry Escorts of the selected Analyzer session are immediately scanned in all loaded instruments and displayed as a long or short signal.

*You can find more information on this further down in this document.*





## Order Escort: managing your orders

This tool consists of a window that contains more entry parameters for submitting orders than the normal order entry dialog window.

The screenshot shows the Order Escort trading interface. At the top, there are two tabs: 'Direct' and 'Synthetic'. Under 'Direct', there are buttons for 'Limit', 'StopLimit', 'Stop', and 'Market'. Under 'Synthetic', there are buttons for 'Limit', 'StopLimit', and 'Stop'. A 'Flatten Trade' button is located to the right. Below these is a 'Market' dropdown menu and a red 'Trading' indicator. The main section is titled 'Trade' and shows 'CBK.DE 1 Day'. It includes fields for 'Entry' (11.88), 'Size' (800), 'Pos. Size' (800), 'H-Trail' (11.438), 'Soft Trail' (11.549), 'H-Risk' (353.6), and 'Soft Risk' (264.8). There are radio buttons for 'Buy' and 'Sell'. Below this is a 'Strategy' section with a 'Freeze' checkbox and options for 'Entry' (ManualMode), 'Init. Stop' (ATR), 'Hard Trail' (BollingerBands), 'Soft Trail' (Eight Trail), and 'Target' (Pivot2Levels). There are 'Halt' checkboxes for the Hard and Soft Trail options. At the bottom, there is a 'Discretionary' section with a 'Quantity' field (100) and buttons for 'Buy-Ask', 'Buy-Bid', 'Buy-Mkt', 'Flatten', 'Sell-Ask', 'Sell-Bid', 'Sell-Mkt', and 'Reverse'. A 'Save Setup...' button is also present.

Order buttons (top): the order buttons are categorized into three areas: direct orders, synthetic orders and scale-in orders. The functionality of all available buttons is always used for an entry order.

Trade box (middle): the trade box displays relevant information on the current trade parameters, such as: entry price, stops, order and position size and the current risk.

Strategy box (middle): the strategy box suggests a setup based on selected or calculated entry signals.

Discretionary trading (bottom): with these buttons, you can quickly place orders in the chart, flatten and even reverse them. The reverse button also works for AT++ trading strategies.



View of the Order Escort in the chart, which is opened using the action bar when AT++ is active in the chart.





## Advanced scanner

AgenaTrader has developed an extremely innovative scanner (Analyzer Escort) that makes it possible to scan hundreds of instruments in real time. As soon as signals that have occurred fulfill the requirements of the predefined parameters within the Setup Escort, the Analyzer Escort displays these in the corresponding column.

Located signals are displayed in **green** for long entries and **red** for short entries. You can double-click on the signal in the scanner to enter a semi-automated AgenaTrader++ trading strategy.

Symbol	Name	MainSector	Ask	Bid	Last	RSI	Analyzer 1Min	Analyzer 5Min	Analyzer 1Hour
DIS	Walt Disney Com...	Services	97.91	97.90	97.90	38.60	MTPProEarlyP3 [1]		MTPProOutsideBar...
GE.S	General Electric Co	Industrial Goods	24.26	24.25	24.25	38.65			MTPProReversalB...
TRV	Travelers Compan...	Financial	120.82	120.89	120.89	44.25			
NKE	NIKE Inc	Consumer Goods	53.73	53.72	53.73	44.85	MTPProOutsideBar...		
UTX	United Technologi...	Industrial Goods	112.99	112.97	112.98	44.90	MTPProOutsideBar...		
MCD	McDonald's Corp	Services	157.10	157.06	157.09	45.95	MTPProEarlyP3 [1]	MTPProEarlyP3	MTPProOutsideBar...
AAPL	Apple Inc.	Consumer Goods	159.58	159.57	159.57	51.55			
IBM	International Busin...	Technology	144.76	144.75	144.76	53.10	MTPProOutsideBar...		
GS	Goldman Sachs G...	Financial	227.74	227.70	227.72	53.65		MTPProEarlyP3 [1]	MTPProP2Breakout
JPM	JPMorgan Chase ...	Financial	92.85	92.84	92.85	53.90			MTPProOutsideBar...
KO	Coca-Cola Co (The)	Consumer Goods	45.92	45.91	45.91	55.20			MTPProOutsideBar...
VZ	Verizon Communi...	Technology	47.67	47.66	47.67	55.70		MTPProOutsideBar...	
WMT	Wal-Mart Stores, I...	Services	80.70	80.69	80.69	57.80			
JNJ	Johnson & Johnson	Healthcare	135.70	135.68	135.70	57.95		MTPProOutsideBar...	MTPProOutsideBar...
CSCO	Cisco Systems, Inc.	Technology	32.64	32.63	32.63	58.35			
UNH	UnitedHealth Grou...	Healthcare	198.31	198.27	198.32	58.35			
DD.S	Du Pont (E.I.) de ...	Basic Materials	84.97	84.93	83.93	59.75	MTPProOutsideBar...		
AXP	American Express...	Financial	87.52	87.51	87.51	61.10			
PG	Procter & Gamble ...	Consumer Goods	93.20	93.19	93.20	61.15			
HD	Home Depot Inc	Services	158.31	158.29	158.32	61.95			
V	Visa Inc.	Financial	105.22	105.21	105.21	62.20		MTPProOutsideBar...	
MSFT	Microsoft Corpora...	Technology	75.57	75.56	75.57	62.35			
XOM	Exxon Mobil Corp.	Basic Materials	79.91	79.90	79.91	65.85		MTPProOutsideBar...	
PFE	Pfizer Inc	Healthcare	35.39	35.38	35.38	69.45			
MMM	3M Co	Industrial Goods	213.47	213.45	213.46	70.40			MTPProReversalB...
INTC	Intel Corporation	Technology	37.25	37.24	37.25	70.55	MTPProEarlyP3 [1]		MTPProOutsideBar...
CAT	Caterpillar Inc.	Industrial Goods	123.52	123.51	123.52	70.95	MTPProReversalBars		
BA	Boeing Co. (The)	Industrial Goods	252.34	252.29	252.32	72.20	MTPProEarlyP3		
CVX	Chevron Corporati...	Basic Materials	114.68	114.67	114.68	74.10			MTPProReversalBars
MRK	Merck & Co., Inc	Healthcare	65.99	65.98	65.98	75.20	MTPProEarlyP3 [1]		

You can find additional AT++ scanner functions in the Analyzer Escort area. The columns in the scanner can be organized using drag & drop.

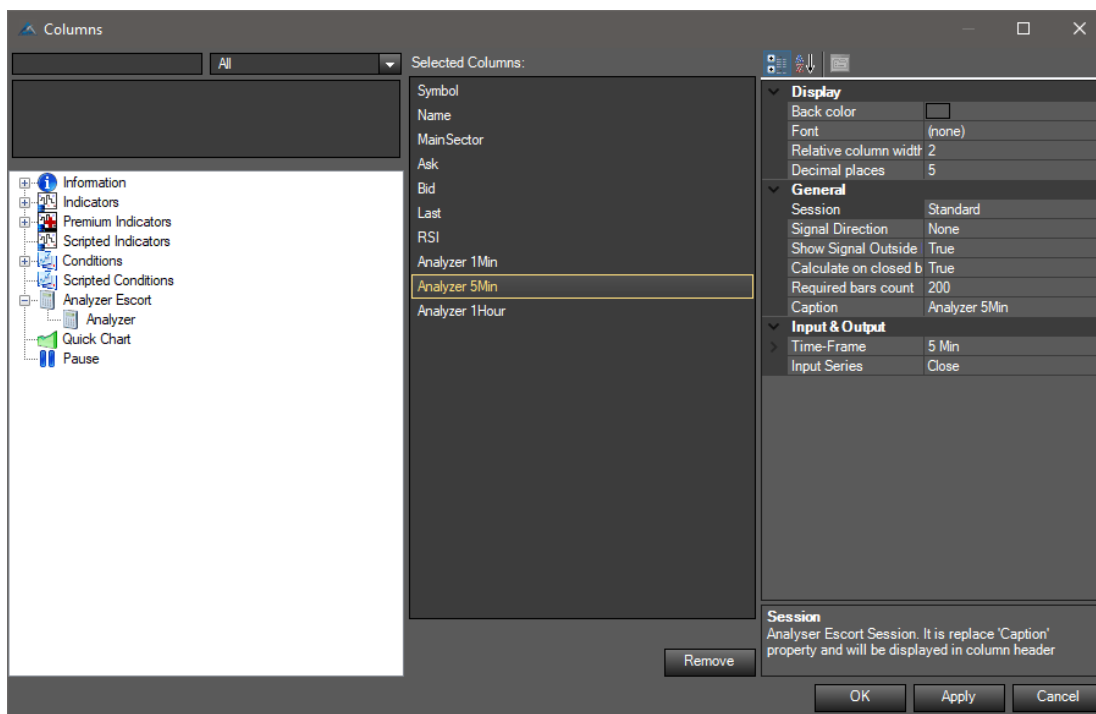


## Analyzer Escort column: signal scanner

Right-click in the scanner column and select the option “edit columns” to call up the scanner columns editor. The columns editor can also be opened using the pen in the chart toolbar. With the columns editor, you can add (or remove) numerous columns to (or from) the scanner.

## Columns editor

Search and build menu (left): this enables you to add (or remove) numerous columns from (or to) the scanner. Using drag & drop or by double-clicking, the selected element can be shifted from the left to the middle.



## Selected columns (middle):

List of the columns that have been added or that already exist in the scanner.



Parameter box (right):


Makes it possible for you to define various scanner column (or watch list) parameters. When doing so, the element must be selected in the middle so that you can edit the parameters on the right.

A further option for adding an Analyzer is to use the scanner toolbar. There are two symbols just for this, which you can see marked in green at the bottom of the image. To add an analyzer, you must select an Analyzer session, which is created in the Setup Escort. In addition, a timeframe must also be selected. You can find further settings options for the Analyzer Escort in the columns editor. There you can, for example, change the number of bars for calculating the signals.

Symbol	Name	MainSector	Ask	Bid	Last	RSI	Analyzer 1Min	Analyzer 5Min	Analyzer 1Hour
DIS	Walt Disney Com...	Services	97.91	97.90	97.90	38.60	MTPProEarlyP3 [1]		MTPProOutsideBar...
GE S	General Electric Co	Industrial Goods	24.26	24.25	24.25	38.65			MTPProReversaB...
TRV	Travelers Compan...	Financial	120.82	120.89	120.89	44.25			
NKE	NIKE Inc	Consumer Goods	53.73	53.72	53.73	44.85	MTPProOutsideBar...		
UTX	United Technologi...	Industrial Goods	112.99	112.97	112.98	44.90	MTPProOutsideBar...		
MCD	McDonald's Corp	Services	157.10	157.06	157.09	45.95	MTPProEarlyP3 [1]	MTPProEarlyP3	MTPProOutsideBar...
AAPL	Apple Inc.	Consumer Goods	159.58	159.57	159.57	51.55			
IBM	International Busin...	Technology	144.76	144.75	144.76	53.10	MTPProOutsideBar...		



## Condition Escort: creating your own signals and conditions

The Condition Escort  is a further important feature of AgenaTrader. Here you have the possibility to program your own conditions without prior programming knowledge using drag & drop, or you can use AgenaScript if you are already familiar with programming. The scanner uses these conditions to scan the market. You can find this tool in the main menu toolbar under “Strategy Handling”.

Configuration-Escort

Environment

- General
- Login
- Chart
- Financial Calendar
- History
- Discretionary Trading
- AT++ Manager
  - General
  - Entries
  - Stops
  - Targets
  - Order Rounding
  - Risk Management
  - Setup Escort and Analyzer
  - Condition Escort
    - MACD
    - ReversalBars
    - TurtleTrader
      - TurtleLong
      - TurtleShort
- Action Bar
- Alerts
- HotKeys
- Traders Yard
- Directories

Condition: TurtleShort Short

Description:

Entry  
 Exit  
 None

Arrow: [Red Bar]

Small

Bar: [Blue Bar]

Text: [Text Box]

Scanner: [Blue Bar]

Category: TurtleTrader  Calculate on Bar Close

**General**  
Bars Ago: 0  
Serie: Close

**Input**  
Instrument: [Empty]  
Time-Frame: (Empty)

Bars Ago  
Number of bars from current bar

Close[0] - Inherited Time Frame  
Low[0] - Inherited Time Frame  
DonchianChannel(Close, 20).Lower[1] - Inherited Time Frame  
DonchianChannel(Close, 20).Lower[3] - Inherited Time Frame  
RSI(Close, 14, 3).Default[0] - Inherited Time Frame  
MACD(Close, 12, 26, 9).Default[0] - Inherited Time Frame

Open[0] - Inherited Time Frame  
DonchianChannel(Close, 20).Lower[1] - Inherited Time Frame  
DonchianChannel(Close, 20).Lower[3] - Inherited Time Frame  
DonchianChannel(Close, 20).Lower[5] - Inherited Time Frame  
50  
MACD(Close, 12, 26, 9).Avg[0] - Inherited Time Frame

Show Row Numbers


Remove

Verify Advanced Save As

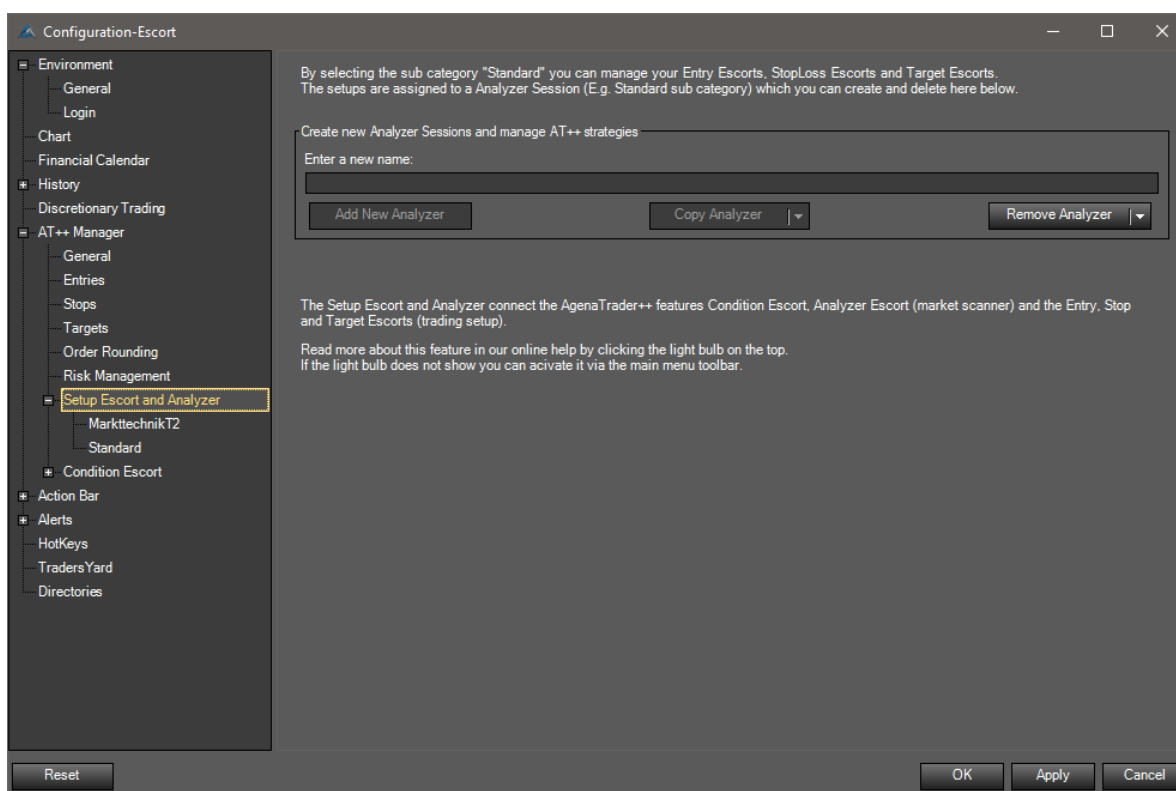
Reset OK Apply Cancel



## Setup Escort: manual or automated trading setups

The Setup Escort  makes it possible to create strategies for your order setup, such as entry, stop loss (incl. trailing stop) and targets. Furthermore, it is necessary for activating conditions for the Analyzer session (the Analyzer session is used in conjunction with the Analyzer Escort of the scanner).

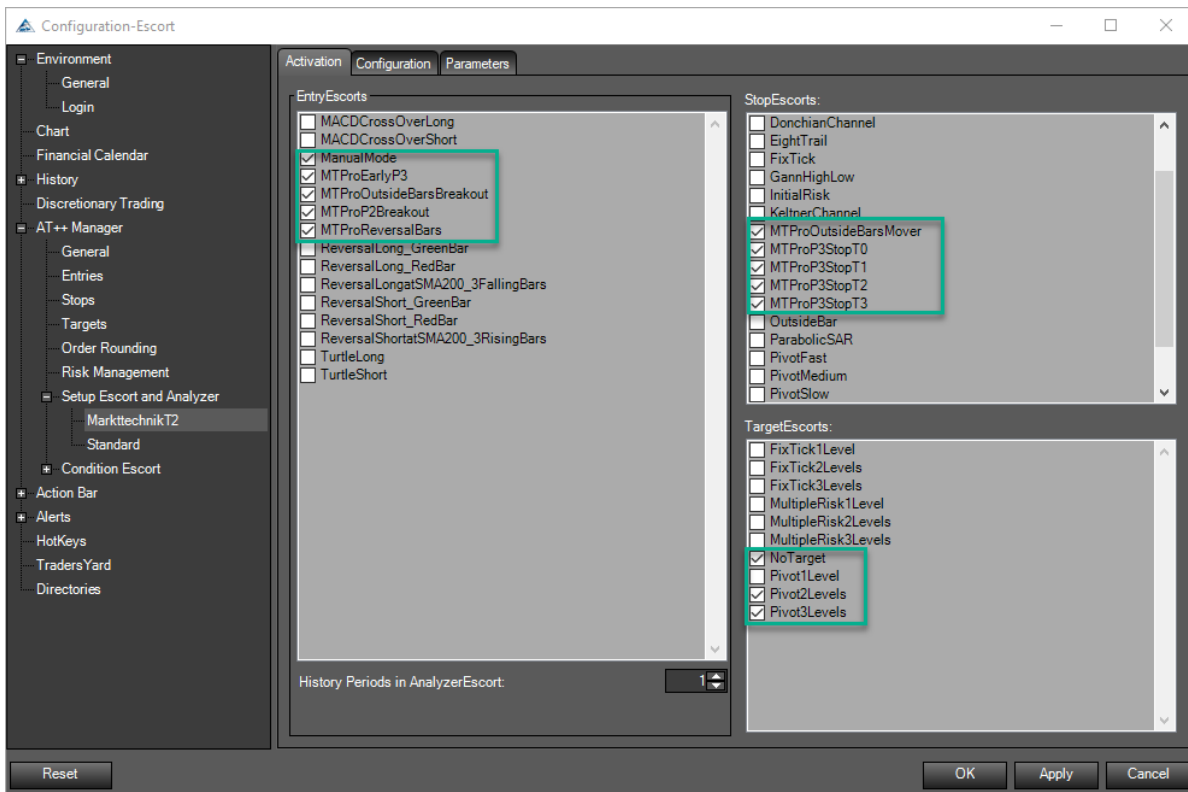
The main category Setup Escort and Analyzer is where Analyzer sessions are created and edited. In addition, an Analyzer session can also be loaded as an Analyzer in the scanner.





After selecting the desired Analyzer session, you can begin activating and configuring the trading setups.

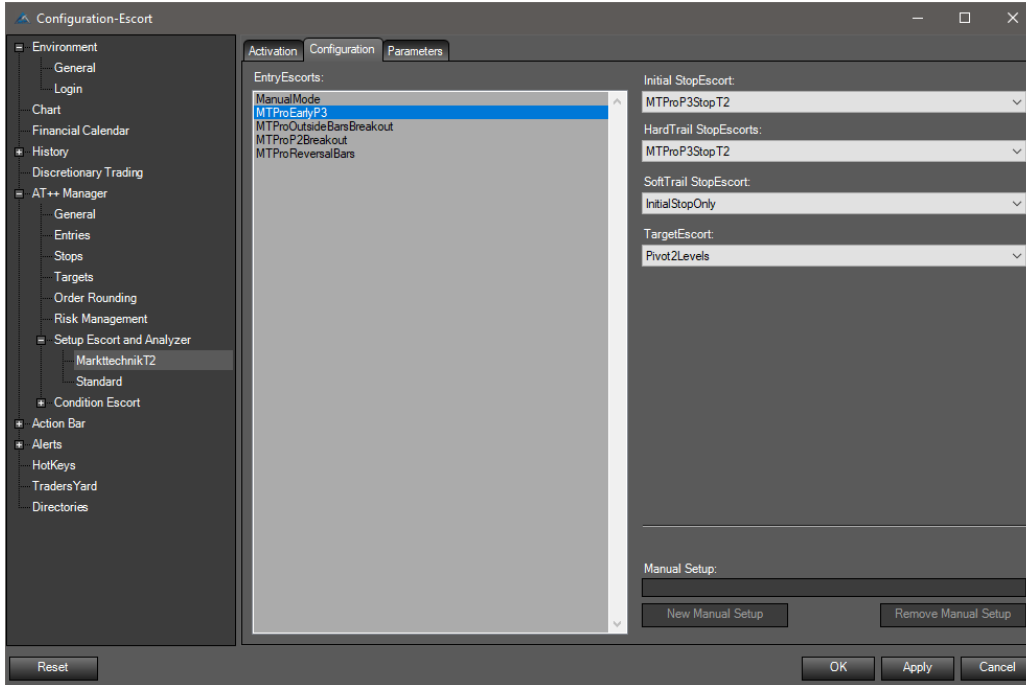
Activation tab, with which you can activate and deactivate entry, stop and target methods.



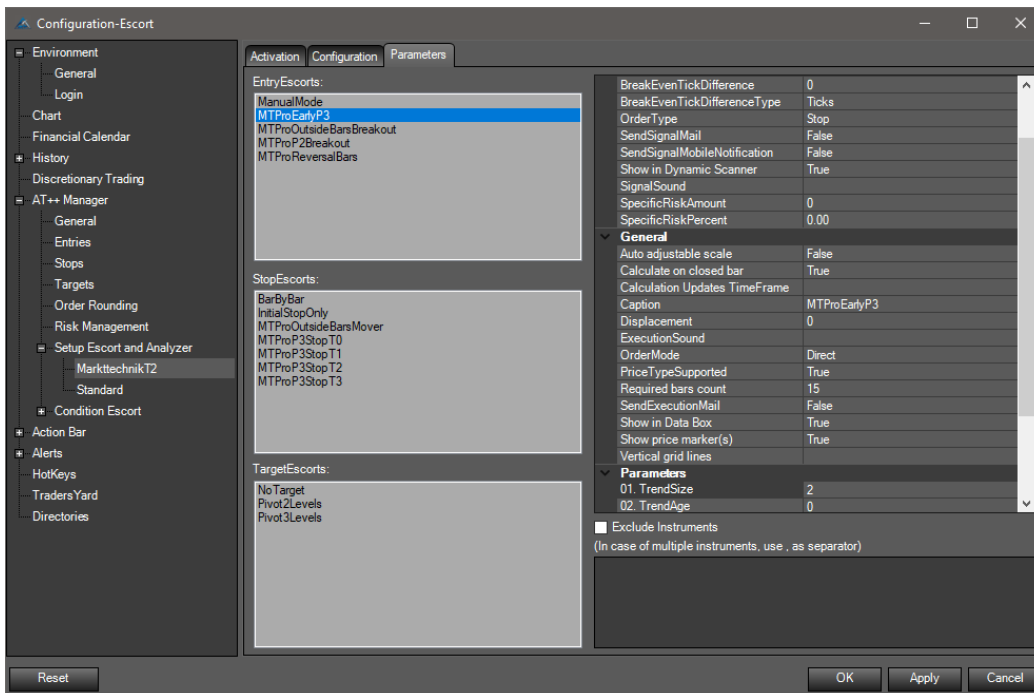




Configuration tab, with which you can create completely automated trading strategies:



Parameter tab: modifies various entry, stop and target methods.



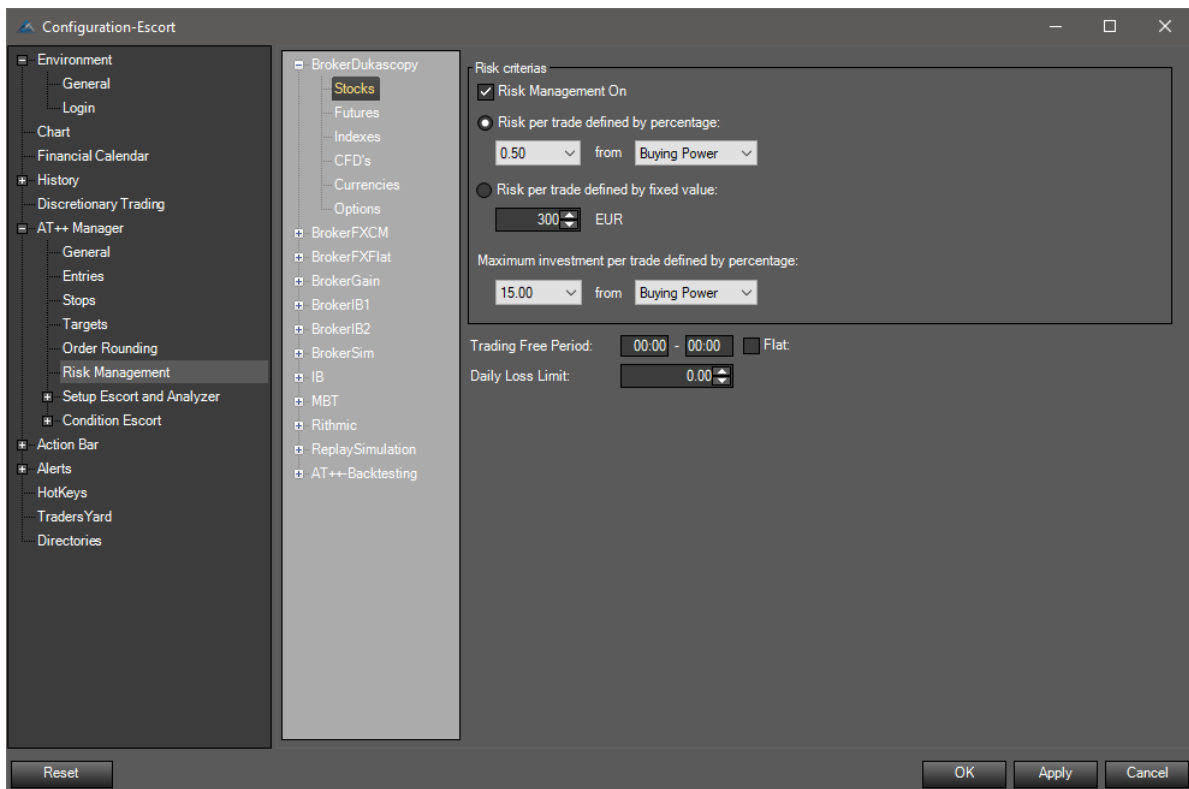


## Risk management

The AT++ Manager can be found via the main menu bar under *Strategies*.

The risk management automatically calculates the order size for each AT++ trading strategy. Various risk settings can be defined per broker and for each asset class.

You can access the risk management parameters in the Configuration Escort, which is available in the main menu toolbar under *Strategies*, followed by *AT++ Configuration*.







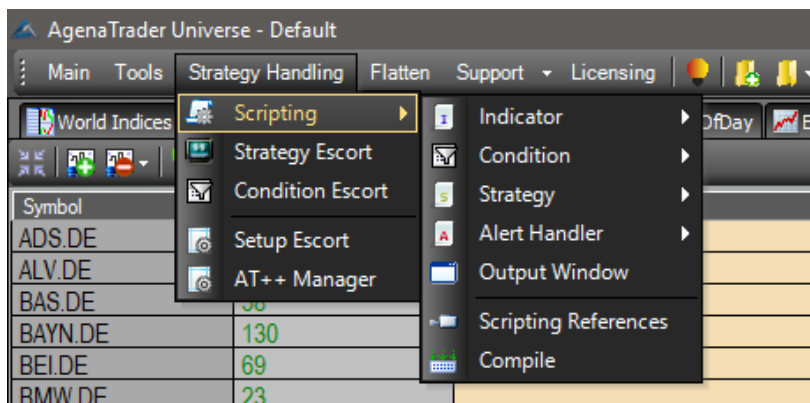
## Programming with AgenaScript

The AgenaTrader programming environment (script) is similar to that of Visual Studio, and with it you can:

- ✓ navigate the programming workspace with the help of tools
- ✓ use the editor to handle several components at once (top tab bar)
- ✓ use the IntelliSense™ function
- ✓ have a list of the errors displayed at the bottom of the screen

```
6 using System.Xml.Serialization;
7 using System.Diagnostics;
8 using System.Drawing.Drawing2D;
9 using AgenaTrader.API;
10 using AgenaTrader.Custom;
11 using AgenaTrader.Plugins;
12
13 //-----
14 // <auto-generated>
15 // This code was generated by AgenaTrader conversion tool.
16 // </auto-generated>
17 //-----
18
19 // This namespace holds all indicators and is required. Do not change it.
20 namespace AgenaTrader.UserCode
21 {
22     /// <summary>
23     /// Enter the description of your new custom indicator here
24     /// </summary>
25     [Description("Enter the description of your new custom indicator here")]
26     public class MyOutsideBar : UserIndicator
27     {
28         Variables
29
30         /// <summary>
31         /// This method is used to configure the indicator and is called once before any bar data is
32         /// </summary>
33         protected override void Initialize()
34         {
35             this.
36             Add ( Equals
37             Add ( GetHashCode
38             Calc ( GetType
39             Over ( HighValue
40             Price ( Initialize
41             LowValue
42             MemberwiseClone
43             MyOutsideBar
44             OnBarUpdate
45             OutsideBarHigh
46             LowColor (KnownColor.Orange), PlotStyle.Line, "OutsideBarHigh");
47             HighColor (KnownColor.Green), PlotStyle.Line, "OutsideBarLow");
48             ue;
49             ue;
50             lse;
51         }
52     }
53 }
```

You can access the programming in the main menu toolbar under the category “Strategy”.

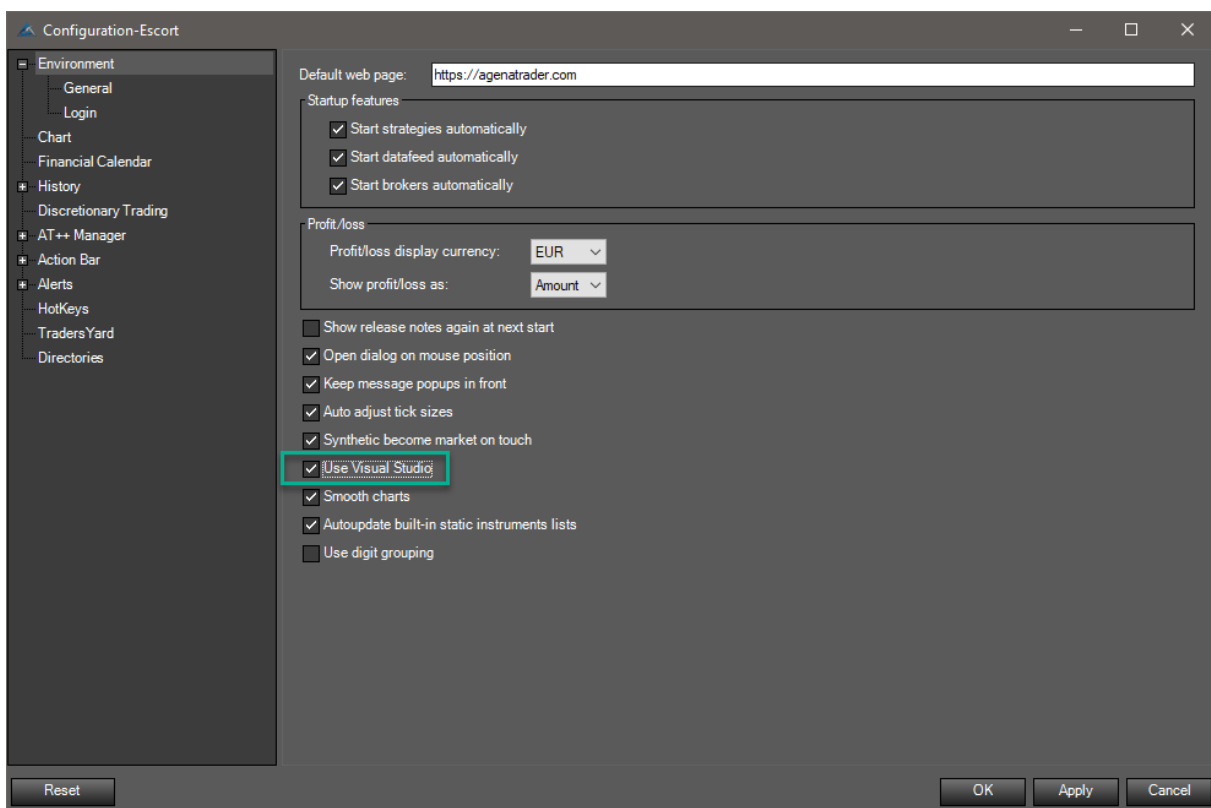




## Using Microsoft Visual Studio as a scripting console


A well-known scripting console for programming C# code is Microsoft Visual Studio. With AgenaTrader it is also possible to connect directly to MSVS and to use this for scripting instead of the internal console.

Install the free MSVS 2015 Community Version and activate the connection in the Configuration Escort; following this, MSVS is automatically started when you create a new script.







## Tab chart groups: advanced charting

The tab chart group  is a chart container that opens several charts for different instruments simultaneously and displays the symbols for the instruments in the lower tab bar.


## Stock EOD screener

The stock EOD screener  makes it possible to scan for fundamental and technical criteria for approx. 7000 US stocks.





## Trading journal

AgenaTrader records every trade and keeps an automatic trading diary . This makes it possible for you to clearly understand and evaluate trading behavior. To open the trading journal, go to Trading Journal by selecting *Main* then *New*.

## Backtesting

The backtest  was implemented as a core feature for analyzing the performance of a strategy on a historical basis. It is possible to backtest a strategy for a single instrument (security) or an instrument list (portfolio). To open the backtest window, go to *Main->New* and select *Backtest*.

## Additional functions

The watch list  and the scanner fulfill the same functions in the list chart group. The Record/Replay Escort  can record market data from a running operation and then replay as needed. The LCG  / TCG  are the chart containers that contain a scanner and a charting area.



## Helpful links:

Online help (wiki):

<https://agenatrader.com/wiki/>

Video portal:

<https://agenatrader.com/agenaspace-online-software-training/>

Live webinar calendar:

<https://agenatrader.com/trading-webinars/>

AgenaScript documentation:

<https://agenatrader.github.io/AgenaScript-documentation/index.html>

AgenaIndicator documentation:

<https://agenatrader.github.io/AgenaIndicator-documentation/index.html>

Script tutorials:

<https://agenatrader.github.io/Tutorials/>

Partners: brokers

<https://agenatrader.com/broker>

Partners: market data feeds

<https://agenatrader.com/datafeeds>

Partners: indicator and strategy development:

<https://agenatrader.com/trading-strategy-development>

Partners: trading education

<https://agenatrader.com/trading-education>

Partners: software coaching:

<https://agenatrader.com/trading-platform-education>



This handbook contains all core functions of AGENATrader. It provides a comprehensive overview of all available functions. The brief handbook is ideal for newcomers to get started and orient themselves within the software. It also serves as a reference work for advanced users.